



PIPE FITTING

Company Profile

Ningbo Fokca Automation Co., Ltd., founded in 2008, is a production-oriented enterprise specializing in fluid connection system services. We have an excellent R&D technical team, first-class production equipment, and all workshops are managed in accordance with 6S requirements. At present, there are 18 production lines, more than 2,000 equipments with an annual turnover of more than 20 million U.S. dollars, and our customers covers 80+ countries and regions worldwide.

The main products are PU tube, PU spiral tubing, PU Textile reinforced tubing, PA nylon tube, PE water purification tube, Teflon tube, other special purpose tube, one touch fitting, stainless steel push in tubing fitting, and pneumatic quick couplings. They apply to many new technology fields such as industrial automation, medical treatment, sanitary ware, automobile manufacturing, wire and cable, gardening and agricultural irrigation etc.

In order to ensure the stability of product quality, we use 100% genuine high-quality TPU, EVA and PE and other new raw materials to make our tubing's appearance shiny, smooth and flexible. In every link of product design, color matching, producing, testing, packaging, we can accurately control to ensure that our products always have excellent performance. Regarding the matching connection fittings, they are produced with lead-free environmentally friendly brass, stainless steel SUS316/SUS316L, high-quality POM. From raw materials to production process, from inspection to packaging and shipment, there are 8 quality inspection procedures totally to ensure each link perfect.

Fokca always takes health, green and environmental protection as its own responsibility. Fokca's products meet ROHS environmental protection requirements and have passed CE certification and FDA food and medical approval. In addition to standard products available in stock, we can also produce customized products for you. Sincerely looks forward to your cooperation!



Table of contents

1 Brass Fittings And Connectors

AB-003 Male to female elbow	06
AB-024 Nut lock fitting	06
AB-025 Male brass elbow	06
AB-026 Male to female elbow	07
AB-027 Male to female T branch	07
AB-028 M-F Tee branch	07
AB-029 Female Tee branch	08
AB-030 Female cross	08
AB-031 Male Tee branch	08
AB-032 Male brass nipple	09
AB-033 Male brass reducer	09
AB-034 M-F brass connector	09
AB-035 F-M brass reducer	10
AB-036 Inner Hex. plug	10
AB-038 Hex head plug	10
AB-039 Female brass socket	11
AB-044 Female 4ways Y branch	11
AB-045 Female 3ways Y branch	11
AB-046 F-M 3ways Y branch	12
AB-047 Male hose barb elbow	12
AB-048 Male hose barb	12
AB-050 Female hose barb	13
AB-053 Hose barb nipple	13
AB-054 Hose barb Tee branch	13
AB-055 Hose barb Y branch	14
AB-056 Hose barb cross	14
AB-057 Brass ferrule fitting	14
AB-074 Brass ferrule elbow	15
AB-075 Brass swivel connector	15

2 Brass Fittings With Nickel Plated

AB-001N Brass male elbow	16
AB-002N Brass female elbow	16
AB-003N Brass F-M elbow	16
AB-007N Brass Tee branch	17
AB-008N Brass female Tee branch	17
AB-009N Brass F-F-M Tee branch	17
AB-010N Brass F-M-F Tee branch	18
AB-011N Brass M-F-M Tee branch	18
AB-032N Male double nipple	18
AB-033N Male reducer nipple	19
AB-034N Brass F-M adapter	19
AB-035N Brass F-M reducer	19
AB-036N Brass Hex.socket plug	20
AB-037N Brass Hex.socket plug	20
AB-039N Brass female socket	20
AB-048N Brass hose barb	21
AB-086N Extended F-M adapter	21

3 Brass Rapid Fitting With Nickel Plated

RPC Male straight	22
RPL Male swivel 90°elbow	22
RPLW Male 90°elbow	22
RPU Straight fitting	23
RPM Bulkhead straight	23
RPV 90°elbow	23
RPE Tee branch	24
RPB Male Tee branch	24
RPB-G Male Tee branch with o ring	24
RPH Male banjo fitting	25
RPZA Cross fitting	25

4 Brass Ferrule Compression Fitting

FPB Brass ferrule compression male Tee branch	26
FPC Brass ferrule compression male straight	26
FPCF Brass ferrule compression female straight	26
FPD Brass ferrule compression male Tee branch	27
FPE Brass ferrule compression Tee branch	27
FPL Brass ferrule compression male elbow	27
FPM Brass ferrule compression bulkhead straight	28
FPU Brass ferrule compression straight	28
FPV Brass ferrule compression elbow	28
FPZA Brass ferrule compression cross	29

5 Carbon Steel Connector

CS-032 Steel double nipple	30
CS-034 Steel F-M adapter	30
CS-035 Steel F-M reducer	30
CS-036 Steel Hex.socket plug	31
CS-037 Steel Hex.socket plug	31
CS-038 Steel Hex.plug	31
CS-039 Steel female socket	32
CS-041 Steel bulkhead fitting	32
CS-8054 Female five ports	32
CS-8057 Five ports adapter	33
CS-8059 Male five ports	33
CS-8060 Female six ports	33
CS-8061 Male six ports	34
CS-8069 Male six ports	34
CS-8071 Steel tri-branch 90°	34
CS-8072 Steel Tee branch	35
CS-8073 Steel Tri-branch 120°	35
CS-8074 Steel elbow with nut	35

CS-8077 Steel round elbow	36
CS-8078 Steel long Tee branch	36
CS-8081N Steel long tri-branch 120°	36
CS-8081 Long tri-branch 120° with nut	37
CS-8083N Steel elbow with nut	37
CS-8083 Steel long elbow	37
CS-8087 Steel Arc elbow	38
CS-8092 Steel tri-branch with nut	38

6 Check Valve (Non-Return Valve)

CV-01 One way check valve	40
CV-03 Brass check valve	40
CV-04 Brass check valve	40
CV-05 Brass check valve	41
CV-06 Brass check valve	41
CV-07 Brass foot valve	41
CV-07F Brass foot valve with mesh	42
CV-07FB Brass foot valve with mesh	42
CV-08 Brass check valve	42
CV-09 Brass foot valve	43
CV-10 Brass exhaust valve	43
CV-12 Steel check valve	43
YF-25 Brass Y drainer	44

7 Copper Pipe Fitting For Cooling And Air-condition System

AC-001 Copper cap	46
AC-002 Copper socket	46
AC-003 Copper reducer	46
AC-004 Copper U elbow	47
AC-005 Copper U elbow	47
AC-006 Copper U elbow socket	47

AC-007 Copper plug-in U elbow	48
AC-008 Copper U elbow	48
AC-009 Copper 45°elbow socket	48
AC-010 Copper 45°elbow socket	49
AC-011 Copper 90°elbow	49
AC-012 Copper 90°elbow socket	49
AC-013 Copper 90°elbow socket	50
AC-014 Copper 90°elbow socket	50
AC-015 Copper reducing 90°elbow	50
AC-016 Copper Tri-branch	51
AC-017 Copper Tri-branch	51
AC-018 Copper Tee branch	51
AC-019 Copper reducing T branch	52
AC-020 Copper reducing T branch	52
AC-021 Copper reducing T branch	52
AC-022 Copper cross	53
AC-023 Copper reducing cross	53
AC-024 Copper curving pipe	53
AC-025 Copper bridge	54
AC-026 Copper bridge T branch	54
AC-027 Copper Tee branch	54
AC-028 Copper reducer	55
AC-029 Copper female plug	55
AC-030 Copper plug	55

8 Others

AC-B Brass air chunk	33
AC-C-B Brass air chunk with clamp	33
AC-C-C Steel air chunk with clamp	33
BF-M Brass male filter	33
UJ-MF-02 Universal joint	33

AB-003
Male to female elbow



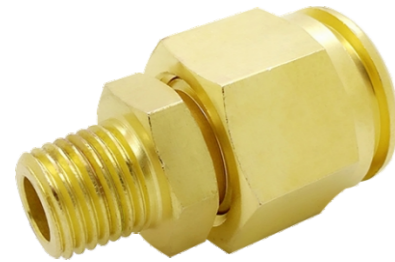
Model	Female	Male
AB-003-1/8-1/8	1/8	1/8
AB-003-1/4-1/4	1/4	1/4
AB-003-3/8-3/8	3/8	3/8
AB-003-1/2-1/2	1/2	1/2
AB-003-3/4-3/4	3/4	3/4

AB-026
Male to female elbow



Model	Female	Male
AB-026-1/8-1/8	1/8	1/8
AB-026-1/4-1/4	1/4	1/4
AB-026-3/8-3/8	3/8	3/8
AB-026-1/2-1/2	1/2	1/2
AB-026-3/4-3/4	3/4	3/4

AB-024
Nut lock fitting



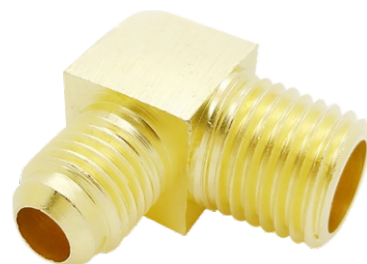
Model	Male	Hose O.D.
AB-024-1/8-6	1/8	6
AB-024-1/4-8	1/4	8
AB-024-3/8-10	3/8	10
AB-024-1/2-12	1/2	12
AB-024-3/4-14	3/4	14
AB-024-1-16	1	16

AB-027
Male to female T branch



Model	Female	Male
AB-027-1/8-1/8	1/8	1/8
AB-027-1/4-1/4	1/4	1/4
AB-027-3/8-3/8	3/8	3/8
AB-027-1/2-1/2	1/2	1/2
AB-027-3/4-3/4	3/4	3/4

AB-025
Male brass elbow



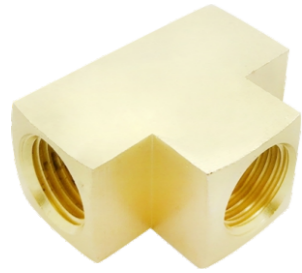
Model	Male(1)	Male(2)
AB-025-1/8-1/8	1/8	1/8
AB-025-1/4-1/4	1/4	1/4
AB-025-3/8-3/8	3/8	3/8
AB-025-1/2-1/2	1/2	1/2
AB-025-3/4-3/4	3/4	3/4

AB-028
M-F Tee branch



Model	Female	Male
AB-028-1/8-1/8	1/8	1/8
AB-028-1/4-1/4	1/4	1/4
AB-028-3/8-3/8	3/8	3/8
AB-028-1/2-1/2	1/2	1/2
AB-028-3/4-3/4	3/4	3/4

AB-029
Female Tee branch



Model	Female	Male
AB-029-1/8	1/8	
AB-029-1/4	1/4	
AB-029-3/8	3/8	
AB-029-1/2	1/2	
AB-029-3/4	3/4	

AB-032
Male brass nipple



Model	Female	Male
AB-032-1/8		1/8
AB-032-1/4		1/4
AB-032-3/8		3/8
AB-032-1/2		1/2
AB-032-3/4		3/4

AB-030
Female cross



Model	Female	Male
AB-030-1/8	1/8	
AB-030-1/4	1/4	
AB-030-3/8	3/8	
AB-030-1/2	1/2	
AB-030-3/4	3/4	

AB-033
Male brass reducer



Model	Male(1)	Male(2)
AB-033-1/8-1/4	1/8	1/4
AB-033-1/4-3/8	1/4	3/8
AB-033-3/8-1/2	3/8	1/2
AB-033-1/2-3/4	1/2	3/4

AB-031
Male Tee branch



Model	Male(1)	Male(2)
AB-031-1/8-1/4	1/8	1/4
AB-031-1/4-3/8	1/4	3/8
AB-031-3/8-1/2	3/8	1/2
AB-031-1/2-3/4	1/2	3/4

AB-034
M-F brass connector



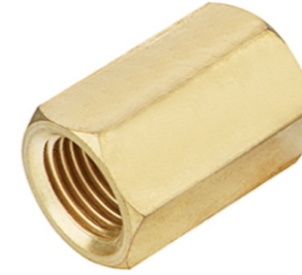
Model	Female	Male
AB-034-1/8-1/8	1/8	1/8
AB-034-1/4-1/4	1/4	1/4
AB-034-3/8-3/8	3/8	3/8
AB-034-1/2-1/2	1/2	1/2
AB-034-3/4-3/4	3/4	3/4

AB-035
F-M brass reducer



Model	Female	Male
AB-035-1/8-1/4	1/8	1/4
AB-035-1/4-3/8	1/4	3/8
AB-035-3/8-1/2	3/8	1/2
AB-035-1/2-3/4	1/2	3/4

AB-039
Female brass socket



Model	Female	Male
AB-039-1/8	1/8	
AB-039-1/4	1/4	
AB-039-3/8	3/8	
AB-039-1/2	1/2	
AB-039-3/4	3/4	

AB-036
Inner Hex. plug



Model	Female	Male
AB-036-1/8		1/8
AB-036-1/4		1/4
AB-036-3/8		3/8
AB-036-1/2		1/2
AB-036-3/4		3/4

AB-044
Female 4ways Y branch



Model	Female	Male
AB-044-1/8	1/8	
AB-044-1/4	1/4	
AB-044-3/8	3/8	
AB-044-1/2	1/2	
AB-044-3/4	3/4	

AB-038
Hex head plug



Model	Female	Male
AB-038-1/8		1/8
AB-038-1/4		1/4
AB-038-3/8		3/8
AB-038-1/2		1/2
AB-038-3/4		3/4

AB-045
Female 3ways Y branch



Model	Female	Male
AB-045-1/8	1/8	
AB-045-1/4	1/4	
AB-045-3/8	3/8	
AB-045-1/2	1/2	
AB-045-3/4	3/4	

AB-046
F-M 3ways Y branch



Model	Female	Male
AB-046-1/8-1/8	1/8	1/8
AB-046-1/4-1/4	1/4	1/4
AB-046-3/8-3/8	3/8	3/8
AB-046-1/2-1/2	1/2	1/2
AB-046-3/4-3/4	3/4	3/4

AB-047
Male hose barb elbow



Model	Male	Hose I.D.
AB-047-1/8-4	1/8	4
AB-047-1/4-5	1/4	5
AB-047-3/8-6.5	3/8	6.5
AB-047-1/2-8	1/2	8
AB-047-3/4-10	3/4	10
AB-047-1-12	1	12

AB-048
Male hose barb



Model	Male	Hose I.D.
AB-048-1/8-4	1/8	4
AB-048-1/4-5	1/4	5
AB-048-3/8-6.5	3/8	6.5
AB-048-1/2-8	1/2	8
AB-048-3/4-10	3/4	10
AB-048-1-12	1	12

AB-050
Female hose barb



Model	Hose I.D.
AB-050-4	4
AB-050-5	5
AB-050-6.5	6.5
AB-050-8	8
AB-050-10	10
AB-050-12	12

AB-053
Hose barb nipple



Model	Male	Hose I.D.
AB-053-4		4
AB-053-5		5
AB-053-6.5		6.5
AB-053-8		8
AB-053-10		10
AB-053-12		12

AB-054
Hose barb Tee branch



Model	Male	Hose I.D.
AB-054-4		4
AB-054-5		5
AB-054-6.5		6.5
AB-054-8		8
AB-054-10		10
AB-054-12		12

AB-055
Hose barb Y branch



Model	Male	Hose I.D.
AB-055-4		4
AB-055-5		5
AB-055-6.5		6.5
AB-055-8		8
AB-055-10		10
AB-055-12		12

AB-056
Hose barb cross



Model	Male	Hose I.D.
AB-056-4		4
AB-056-5		5
AB-056-6.5		6.5
AB-056-8		8
AB-056-10		10
AB-056-12		12

AB-057
Brass ferrule fitting



Model	Male	Hose O.D.
AB-057-1/8-6	1/8	6
AB-057-1/4-8	1/4	8
AB-057-3/8-10	3/8	10
AB-057-1/2-12	1/2	12
AB-057-3/4-14	3/4	14

AB-074
Brass ferrule elbow



Model	Female	Hose O.D.
AB-074-6		6
AB-074-8		8
AB-074-10		10
AB-074-12		12
AB-074-14		14
AB-074-16		16

AB-075
Brass swivel connector



Model	Male	Hose O.D.	Hose I.D.
AB-075-1/8-6	1/8	6	4
AB-075-1/4-8	1/4	8	5
AB-075-3/8-10	3/8	10	6.5
AB-075-1/2-12	1/2	12	8
AB-075-3/4-14	3/4	14	10
AB-075-1-16	1	16	12

AB-001N
Brass male elbow



Model	Female	Male
AB-001N-1/8		1/8
AB-001N-1/4		1/4
AB-001N-3/8		3/8
AB-001N-1/2		1/2
AB-001N-3/4		3/4

AB-007N
Brass Tee branch



Model	Female	Male
AB-007N-1/8		1/8
AB-007N-1/4		1/4
AB-007N-3/8		3/8
AB-007N-1/2		1/2
AB-007N-3/4		3/4

AB-002N
Brass female elbow



Model	Female	Male
AB-002N-1/8	1/8	
AB-002N-1/4	1/4	
AB-002N-3/8	3/8	
AB-002N-1/2	1/2	
AB-002N-3/4	3/4	

AB-008N
Brass female Tee branch



Model	Female	Male
AB-008N-1/8		1/8
AB-008N-1/4		1/4
AB-008N-3/8		3/8
AB-008N-1/2		1/2
AB-008N-3/4		3/4

AB-003N
Brass F-M elbow



Model	Female	Male
AB-003N-1/8-1/8	1/8	1/8
AB-003N-1/4-1/4	1/4	1/4
AB-003N-3/8-3/8	3/8	3/8
AB-003N-1/2-1/2	1/2	1/2
AB-003N-3/4-3/4	3/4	3/4

AB-009N
Brass F-F-M Tee branch



Model	Female	Male
AB-009N-1/8-1/8	1/8	1/8
AB-009N-1/4-1/4	1/4	1/4
AB-009N-3/8-3/8	3/8	3/8
AB-009N-1/2-1/2	1/2	1/2
AB-009N-3/4-3/4	3/4	3/4

AB-010N
Brass F-M-F Tee branch



Model	Female	Male
AB-010N-1/8-1/8	1/8	1/8
AB-010N-1/4-1/4	1/4	1/4
AB-010N-3/8-3/8	3/8	3/8
AB-010N-1/2-1/2	1/2	1/2
AB-010N-3/4-3/4	3/4	3/4

AB-011N
Brass M-F-M Tee branch



Model	Female	Male
AB-011N-1/8-1/8	1/8	1/8
AB-011N-1/4-1/4	1/4	1/4
AB-011N-3/8-3/8	3/8	3/8
AB-011N-1/2-1/2	1/2	1/2
AB-011N-3/4-3/4	3/4	3/4

AB-032N
Male double nipple



Model	Female	Male
AB-032N-1/8		1/8
AB-032N-1/4		1/4
AB-032N-3/8		3/8
AB-032N-1/2		1/2
AB-032N-3/4		3/4

AB-033N
Male reducer nipple



Model	Male(1)	Male(2)
AB-033N-1/8-1/4	1/8	1/4
AB-033N-1/4-3/8	1/4	3/8
AB-033N-3/8-1/2	3/8	1/2
AB-033N-1/2-3/4	1/2	3/4

AB-034N
Brass F-M adapter



Model	Female	Male
AB-034N-1/8-1/8	1/8	1/8
AB-034N-1/4-1/4	1/4	1/4
AB-034N-3/8-3/8	3/8	3/8
AB-034N-1/2-1/2	1/2	1/2
AB-034N-3/4-3/4	3/4	3/4

AB-035N
Brass F-M reducer



Model	Female	Male
AB-035N-1/8-1/4	1/8	1/4
AB-035N-1/4-3/8	1/4	3/8
AB-035N-3/8-1/2	3/8	1/2
AB-035N-1/2-3/4	1/2	3/4

AB-036N
Brass Hex.socket plug



Model	Female	Male
AB-036N-1/8		1/8
AB-036N-1/4		1/4
AB-036N-3/8		3/8
AB-036N-1/2		1/2
AB-036N-3/4		3/4

AB-037N
Brass Hex.socket plug



Model	Female	Male
AB-037N-1/8		1/8
AB-037N-1/4		1/4
AB-037N-3/8		3/8
AB-037N-1/2		1/2
AB-037N-3/4		3/4

AB-039N
Brass female socket



Model	Female	Male
AB-039N-1/8	1/8	
AB-039N-1/4	1/4	
AB-039N-3/8	3/8	
AB-039N-1/2	1/2	
AB-039N-3/4	3/4	

AB-048N
Brass hose barb



Model	Male	Hose I.D.
AB-048N-1/8-4	1/8	4
AB-048N-1/4-5	1/4	5
AB-048N-3/8-6.5	3/8	6.5
AB-048N-1/2-8	1/2	8
AB-048N-3/4-10	3/4	10
AB-048N-1-12	1	12

AB-086N
Extended F-M adapter



Model	Female	Male
AB-086N-1/8-1/8	1/8	1/8
AB-086N-1/4-1/4	1/4	1/4
AB-086N-3/8-3/8	3/8	3/8
AB-086N-1/2-1/2	1/2	1/2
AB-086N-3/4-3/4	3/4	3/4

RPC
Male straight



Model	Male	Hose O.D.	Hose I.D.
RPC-1/8-6	1/8	6	4
RPC-1/4-8	1/4	8	5
RPC-3/8-10	3/8	10	6.5
RPC-1/2-12	1/2	12	8
RPC-3/4-14	3/4	14	10
RPC-1-16	1	16	12

RPU
Straight fitting



Model	Hose O.D.	Hose I.D.
RPU-6-4	6	4
RPU-8-5	8	5
RPU-10-6.5	10	6.5
RPU-12-8	12	8
RPU-14-10	14	10
RPU-16-12	16	12

RPL
Male swivel 90°elbow



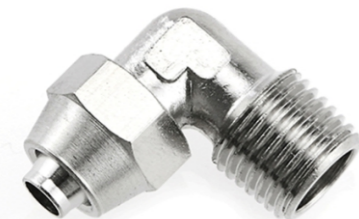
Model	Male	Hose O.D.	Hose I.D.
RPL-1/8-6	1/8	6	4
RPL-1/4-8	1/4	8	5
RPL-3/8-10	3/8	10	6.5
RPL-1/2-12	1/2	12	8
RPL-3/4-14	3/4	14	10
RPL-1-16	1	16	12

RPM
Bulkhead straight



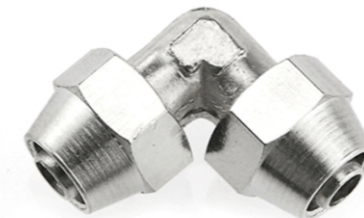
Model	Hose O.D.	Hose I.D.
RPM-6-4	6	4
RPM-8-5	8	5
RPM-10-6.5	10	6.5
RPM-12-8	12	8
RPM-14-10	14	10
RPM-16-12	16	12

RPLW
Male 90°elbow



Model	Male	Hose O.D.	Hose I.D.
RPLW-1/8-6	1/8	6	4
RPLW-1/4-8	1/4	8	5
RPLW-3/8-10	3/8	10	6.5
RPLW-1/2-12	1/2	12	8
RPLW-3/4-14	3/4	14	10
RPLW-1-16	1	16	12

RPV
90°elbow



Model	Hose O.D.	Hose I.D.
RPV-6-4	6	4
RPV-8-5	8	5
RPV-10-6.5	10	6.5
RPV-12-8	12	8
RPV-14-10	14	10
RPV-16-12	16	12

RPE
Tee branch



Model	Hose O.D.	Hose I.D.
RPE-6-4	6	4
RPE-8-5	8	5
RPE-10-6.5	10	6.5
RPE-12-8	12	8
RPE-14-10	14	10
RPE-1-12	16	12

RPH
Male banjo fitting



Model	Male	Hose O.D.	Hose I.D.
RPH-1/8-6	1/8	6	4
RPH-1/4-8	1/4	8	5
RPH-3/8-10	3/8	10	6.5
RPH-1/2-12	1/2	12	8
RPH-3/4-14	3/4	14	10
RPH-1-16	1	16	12

RPB
Male Tee branch



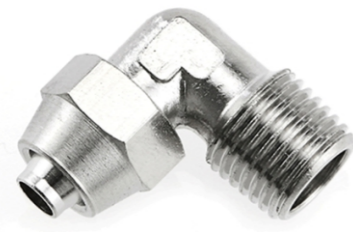
Model	Male	Hose O.D.	Hose I.D.
RPB-1/8-6	1/8	6	4
RPB-1/4-8	1/4	8	5
RPB-3/8-10	3/8	10	6.5
RPB-1/2-12	1/2	12	8
RPB-3/4-14	3/4	14	10
RPB-1-16	1	16	12

RPZA
Cross fitting



Model	Hose O.D.	Hose I.D.
RPZA-6-4	6	4
RPZA-8-5	8	5
RPZA-10-6.5	10	6.5
RPZA-12-8	12	8
RPZA-14-10	14	10
RPZA-16-12	16	12

RPB-G
Male Tee branch with o ring



Model	Male	Hose O.D.	Hose I.D.
RPB-G-1/8-6	1/8	6	4
RPB-G-1/4-8	1/4	8	5
RPB-G-3/8-10	3/8	10	6.5
RPB-G-1/2-12	1/2	12	8
RPB-G-3/4-14	3/4	14	10
RPB-G-1-16	1	16	12

FPB Brass ferrule
compression male Tee branch



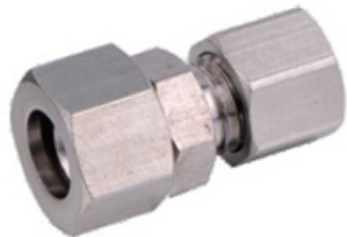
Model	Male	Hose O.D.
FPB-1/8-6	1/8	6
FPB-1/4-8	1/4	8
FPB-3/8-10	3/8	10
FPB-1/2-12	1/2	12
FPB-3/4-14	3/4	14
FPB-1-16	1	16

FPC Brass ferrule
compression male straight



Model	Male	Hose O.D.
FPC-1/8-6	1/8	6
FPC-1/4-8	1/4	8
FPC-3/8-10	3/8	10
FPC-1/2-12	1/2	12
FPC-3/4-14	3/4	14
FPC-1-16	1	16

FPCF Brass ferrule
compression female straight



Model	Hose O.D.
FPCF-6	6
FPCF-8	8
FPCF-10	10
FPCF-12	12
FPCF-14	14
FPCF-16	16

FPD Brass ferrule
compression male Tee branch



Model	Male	Hose O.D.
FPD-1/8-6	1/8	6
FPD-1/4-8	1/4	8
FPD-3/8-10	3/8	10
FPD-1/2-12	1/2	12
FPD-3/4-14	3/4	14
FPD-1-16	1	16

FPE Brass ferrule
compression Tee branch



Model	Hose O.D.
FPE-6	6
FPE-8	8
FPE-10	10
FPE-12	12
FPE-14	14
FPE-16	16

FPL Brass ferrule
compression male elbow



Model	Male	Hose O.D.
FPL-1/8-6	1/8	6
FPL-1/4-8	1/4	8
FPL-3/8-10	3/8	10
FPL-1/2-12	1/2	12
FPL-3/4-14	3/4	14
FPL-1-16	1	16

FPM Brass ferrule
compression bulkhead straight



Model	Hose O.D.
FPM-1/8-6	6
FPM-1/4-8	8
FPM-3/8-10	10
FPM-1/2-12	12
FPM-3/4-14	14
FPM-1-16	16

FPU Brass ferrule
compression straight



Model	Hose O.D.
FPU-6	6
FPU-8	8
FPU-10	10
FPU-12	12
FPU-14	14
FPU-16	16

FPV Brass ferrule
compression elbow



Model	Hose O.D.
FPV-6	6
FPV-8	8
FPV-10	10
FPV-12	12
FPV-14	14
FPV-16	16

FPZA Brass ferrule
compression cross



Model	Hose O.D.
FPZA-6	6
FPZA-8	8
FPZA-10	10
FPZA-12	12
FPZA-14	14
FPZA-16	16

CS-032
Steel double nipple



Model	Female	Male
CS-032-1/8		1/8
CS-032-1/4		1/4
CS-032-3/8		3/8
CS-032-1/2		1/2
CS-032-3/4		3/4

CS-034
Steel F-M adapter



Model	Female	Male
CS-034-1/8		1/8
CS-034-1/4		1/4
CS-034-3/8		3/8
CS-034-1/2		1/2
CS-034-3/4		3/4

CS-035
Steel F-M reducer



Model	Female	Male
CS-035-1/8-1/8	1/8	1/8
CS-035-1/4-1/4	1/4	1/4
CS-035-3/8-3/8	3/8	3/8
CS-035-1/2-1/2	1/2	1/2
CS-035-3/4-3/4	3/4	3/4

CS-036
Steel Hex.socket plug



Model	Female	Male
CS-036-1/8		1/8
CS-036-1/4		1/4
CS-036-3/8		3/8
CS-036-1/2		1/2
CS-036-3/4		3/4

CS-037
Steel Hex.socket plug



Model	Female	Male
CS-037-1/8		1/8
CS-037-1/4		1/4
CS-037-3/8		3/8
CS-037-1/2		1/2
CS-037-3/4		3/4

CS-038
Steel Hex.plug



Model	Female	Male
CS-038-1/8		1/8
CS-038-1/4		1/4
CS-038-3/8		3/8
CS-038-1/2		1/2
CS-038-3/4		3/4

CS-039
Steel female socket



Model	Female	Male
CS-039-1/8	1/8	
CS-039-1/4	1/4	
CS-039-3/8	3/8	
CS-039-1/2	1/2	
CS-039-3/4	3/4	

CS-041
Steel bulkhead fitting



Model	Female	Male
CS-041-1/8-1/4	1/8	1/4
CS-041-1/4-3/8	1/4	3/8
CS-041-3/8-1/2	3/8	1/2
CS-041-1/2-3/4	1/2	3/4

CS-8054
Female five ports



Model	Female	Male
CS-8054-1/4	1/4	
CS-8054-3/8	3/8	
CS-8054-1/2	1/2	
CS-8054-3/4	3/4	

CS-8057
Five ports adapter



Model	Female	Male
CS-8057-1/4-1/4	1/4	1/4
CS-8057-3/8-3/8	3/8	3/8
CS-8057-1/2-1/2	1/2	1/2
CS-8057-3/4-3/4	3/4	3/4

CS-8059
Male five ports



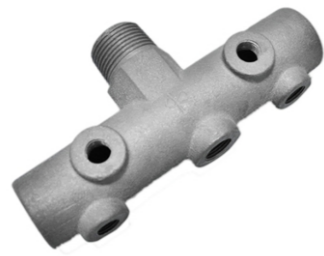
Model	Female	Male
CS-8059-1/4		1/4
CS-8059-3/8		3/8
CS-8059-1/2		1/2
CS-8059-3/4		3/4

CS-8060
Female six ports



Model	Female	Male
CS-8060-1/4	1/4	
CS-8060-3/8	3/8	
CS-8060-1/2	1/2	
CS-8060-3/4	3/4	

CS-8061
Male six ports



Model	Female	Male
CS-8061-1/4-1/4	1/4	1/4
CS-8061-3/8-3/8	3/8	3/8
CS-8061-1/2-1/2	1/2	1/2
CS-8061-3/4-3/4	3/4	3/4

CS-8069
Male six ports



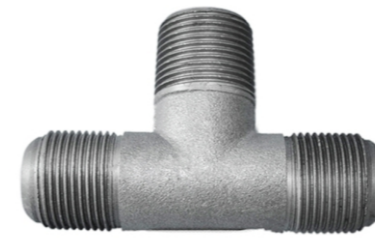
Model	Female	Male
CS-8069-1/4-1/4	1/4	1/4
CS-8069-3/8-3/8	3/8	3/8
CS-8069-1/2-1/2	1/2	1/2
CS-8069-3/4-3/4	3/4	3/4

CS-8071
Steel tri-branch 90°



Model	Female	Male
CS-8071-1/4		1/4
CS-8071-3/8		3/8
CS-8071-1/2		1/2
CS-8071-3/4		3/4

CS-8072
Steel Tee branch



Model	Female	Male
CS-8072-1/4		1/4
CS-8072-3/8		3/8
CS-8072-1/2		1/2
CS-8072-3/4		3/4

CS-8073
Steel Tri-branch 120°



Model	Male(1)	Male(2)
CS-8073-1/4-3/8	1/4	3/8
CS-8073-3/8-1/2	3/8	1/2
CS-8073-1/2-3/4	1/2	3/4

CS-8074
Steel elbow with nut



Model	Female	Male
CS-8074-1/4		1/4
CS-8074-3/8		3/8
CS-8074-1/2		1/2
CS-8074-3/4		3/4

CS-8077
Steel round elbow



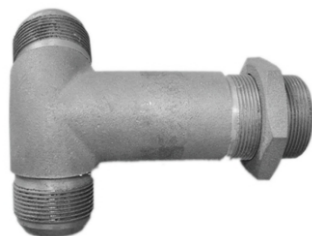
Model	Male(1)	Male(2)
CS-8077-1/4-3/8	1/4	3/8
CS-8077-3/8-1/2	3/8	1/2
CS-8077-1/2-3/4	1/2	3/4

CS-8078
Steel long Tee branch



Model	Female	Male
CS-8078-1/4		1/4
CS-8078-3/8		3/8
CS-8078-1/2		1/2
CS-8078-3/4		3/4

CS-8079
Steel long tri-branch 120°



Model	Female	Male
CS-8079-1/4		1/4
CS-8079-3/8		3/8
CS-8079-1/2		1/2
CS-8079-3/4		3/4

CS-8081
Long tri-branch 120° with nut



Model	Female	Male
CS-8081-1/4		1/4
CS-8081-3/8		3/8
CS-8081-1/2		1/2
CS-8081-3/4		3/4

CS-8083N
Steel elbow with nut



Model	Female	Male
CS-8083N-1/4		1/4
CS-8083N-3/8		3/8
CS-8083N-1/2		1/2
CS-8083N-3/4		3/4

CS-8083
Steel long elbow



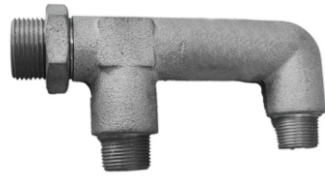
Model	Female	Male
CS-8083-1/4		1/4
CS-8083-3/8		3/8
CS-8083-1/2		1/2
CS-8083-3/4		3/4

CS-8087
Steel Arc elbow



Model	Female	Male
CS-8087-1/4		1/4
CS-8087-3/8		3/8
CS-8087-1/2		1/2
CS-8087-3/4		3/4

CS-8092
Steel tri-branch with nut



Model	Female	Male
CS-8092-1/4		1/4
CS-8092-3/8		3/8
CS-8092-1/2		1/2
CS-8092-3/4		3/4

Check Valve (Non-Return Valve)

CV-01
One way check valve



Model	Female	Male
CV-01-1/8	1/8	
CV-01-1/4	1/4	
CV-01-3/8	3/8	
CV-01-1/2	1/2	
CV-01-3/4	3/4	

CV-03
Brass check valve



Model	Female	Male
CV-03-1/8-1/4	1/8	1/4
CV-03-1/4-3/8	1/4	3/8
CV-03-3/8-1/2	3/8	1/2
CV-03-1/2-3/4	1/2	3/4

CV-04
Brass check valve



Model	Male	Hose O.D.
CV-04-1/8-6	1/8	6
CV-04-1/4-8	1/4	8
CV-04-3/8-10	3/8	10
CV-04-1/2-12	1/2	12
CV-04-3/4-14	3/4	14

Check Valve (Non-Return Valve)

CV-05
Brass check valve



Model	Male	Hose O.D.
CV-05-1/8-6	1/8	6
CV-05-1/4-8	1/4	8
CV-05-3/8-10	3/8	10
CV-05-1/2-12	1/2	12
CV-05-3/4-14	3/4	14

CV-06
Brass check valve



Model	Male	Hose I.D.
CV-06-1/8	1/8	
CV-06-1/4	1/4	
CV-06-3/8	3/8	
CV-06-1/2	1/2	
CV-06-3/4	3/4	

CV-07
Brass foot valve



Model	Female	Male
CV-07-1/8	1/8	
CV-07-1/4	1/4	
CV-07-3/8	3/8	
CV-07-1/2	1/2	
CV-07-3/4	3/4	

Check Valve (Non-Return Valve)

CV-07F

Brass foot valve with mesh



Model	Female	Male
CV-07F-1/8	1/8	
CV-07F-1/4	1/4	
CV-07F-3/8	3/8	
CV-07F-1/2	1/2	
CV-07F-3/4	3/4	

CV-07FB

Brass foot valve with mesh



Model	Female	Hose I.D.
CV-07FB-1/8	1/8	
CV-07FB-1/4	1/4	
CV-07FB-3/8	3/8	
CV-07FB-1/2	1/2	
CV-07FB-3/4	3/4	

CV-08

Brass check valve



Model	Female	Male
CV-08-1/8	1/8	
CV-08-1/4	1/4	
CV-08-3/8	3/8	
CV-08-1/2	1/2	
CV-08-3/4	3/4	

Check Valve (Non-Return Valve)

CV-09

Brass foot valve



Model	Female	Male
CV-09-1/8	1/8	
CV-09-1/4	1/4	
CV-09-3/8	3/8	
CV-09-1/2	1/2	
CV-09-3/4	3/4	

CV-10

Brass exhaust valve



Model	Male	Hose I.D.
CV-10-1/8	1/8	
CV-10-1/4	1/4	
CV-10-3/8	3/8	
CV-10-1/2	1/2	
CV-10-3/4	3/4	

CV-12

Steel check valve



Model	Female	Male
CV-12-1/8		1/8
CV-12-1/4		1/4
CV-12-3/8		3/8
CV-12-1/2		1/2
CV-12-3/4		3/4

YF-25
Brass Y drainer



Model	Female	Male
YF-25-1/8	1/8	
YF-25-1/4	1/4	
YF-25-3/8	3/8	
YF-25-1/2	1/2	
YF-25-3/4	3/4	

AC-001
Copper cap



Model	Hose O.D.
AC-001-1/4	1/4
AC-001-3/8	3/8
AC-001-6	6
AC-001-8	8
AC-001-10	10
AC-001-12	12

AC-002
Copper socket



Model	Hose O.D.
AC-002-1/4	1/4
AC-002-3/8	3/8
AC-002-6	6
AC-002-8	8
AC-002-10	10
AC-002-12	12

AC-003
Copper reducer



Model	Hose O.D.
AC-003-1/4	1/4
AC-003-3/8	3/8
AC-003-6	6
AC-003-8	8
AC-003-10	10
AC-003-12	12

AC-004
Copper U elbow



Model	Hose O.D.
AC-004-1/4	1/4
AC-004-3/8	3/8
AC-004-6	6
AC-004-8	8
AC-004-10	10
AC-004-12	12

AC-005
Copper U elbow



Model	Hose O.D.
AC-005-1/4	1/4
AC-005-3/8	3/8
AC-005-6	6
AC-005-8	8
AC-005-10	10
AC-005-12	12

AC-006
Copper U elbow socket



Model	Hose O.D.
AC-006-1/4	1/4
AC-006-3/8	3/8
AC-006-6	6
AC-006-8	8
AC-006-10	10
AC-006-12	12

AC-007
Copper plug-in U elbow



Model	Hose O.D.
AC-007-1/4	1/4
AC-007-3/8	3/8
AC-007-6	6
AC-007-8	8
AC-007-10	10
AC-007-12	12

AC-008
Copper U elbow



Model	Hose O.D.
AC-008-1/4	1/4
AC-008-3/8	3/8
AC-008-6	6
AC-008-8	8
AC-008-10	10
AC-008-12	12

AC-009
Copper 45°elbow socket



Model	Hose O.D.
AC-009-1/4	1/4
AC-009-3/8	3/8
AC-009-6	6
AC-009-8	8
AC-009-10	10
AC-009-12	12

AC-010
Copper 45°elbow socket



Model	Hose O.D.
AC-010-1/4	1/4
AC-010-3/8	3/8
AC-010-6	6
AC-010-8	8
AC-010-10	10
AC-010-12	12

AC-011
Copper 90°elbow



Model	Hose O.D.
AC-011-1/4	1/4
AC-011-3/8	3/8
AC-011-6	6
AC-011-8	8
AC-011-10	10
AC-011-12	12

AC-012
Copper 90°elbow socket



Model	Hose O.D.
AC-012-1/4	1/4
AC-012-3/8	3/8
AC-012-6	6
AC-012-8	8
AC-012-10	10
AC-012-12	12

AC-013
Copper 90°elbow socket



Model	Hose O.D.
AC-013-1/4	1/4
AC-013-3/8	3/8
AC-013-6	6
AC-013-8	8
AC-013-10	10
AC-013-12	12

AC-014
Copper 90°elbow socket



Model	Hose O.D.
AC-014-1/4	1/4
AC-014-3/8	3/8
AC-014-6	6
AC-014-8	8
AC-014-10	10
AC-014-12	12

AC-015
Copper reducing 90°elbow



Model	Hose O.D.
AC-015-1/4	1/4
AC-015-3/8	3/8
AC-015-6	6
AC-015-8	8
AC-015-10	10
AC-015-12	12

AC-016
Copper Tri-branch



Model	Hose O.D.
AC-016-1/4	1/4
AC-016-3/8	3/8
AC-016-6	6
AC-016-8	8
AC-016-10	10
AC-016-12	12

AC-017
Copper Tri-branch



Model	Hose O.D.
AC-017-1/4	1/4
AC-017-3/8	3/8
AC-017-6	6
AC-017-8	8
AC-017-10	10
AC-017-12	12

AC-018
Copper Tee branch



Model	Hose O.D.
AC-018-1/4	1/4
AC-018-3/8	3/8
AC-018-6	6
AC-018-8	8
AC-018-10	10
AC-018-12	12

AC-019
Copper reducing T branch



Model	Hose O.D.
AC-019-1/4	1/4
AC-019-3/8	3/8
AC-019-6	6
AC-019-8	8
AC-019-10	10
AC-019-12	12

AC-020
Copper reducing T branch



Model	Hose O.D.
AC-020-1/4	1/4
AC-020-3/8	3/8
AC-020-6	6
AC-020-8	8
AC-020-10	10
AC-020-12	12

AC-021
Copper reducing T branch



Model	Hose O.D.
AC-021-1/4	1/4
AC-021-3/8	3/8
AC-021-6	6
AC-021-8	8
AC-021-10	10
AC-021-12	12

AC-022
Copper cross



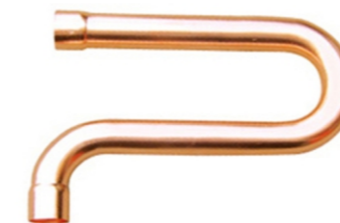
Model	Hose O.D.
AC-022-1/4	1/4
AC-022-3/8	3/8
AC-022-6	6
AC-022-8	8
AC-022-10	10
AC-022-12	12

AC-023
Copper reducing cross



Model	Hose O.D.
AC-023-1/4	1/4
AC-023-3/8	3/8
AC-023-6	6
AC-023-8	8
AC-023-10	10
AC-023-12	12

AC-024
Copper curving pipe



Model	Hose O.D.
AC-024-1/4	1/4
AC-024-3/8	3/8
AC-024-6	6
AC-024-8	8
AC-024-10	10
AC-024-12	12

AC-025
Copper bridge



Model	Hose O.D.
AC-025-1/4	1/4
AC-025-3/8	3/8
AC-025-6	6
AC-025-8	8
AC-025-10	10
AC-025-12	12

AC-026
Copper bridge T branch



Model	Hose O.D.
AC-026-1/4	1/4
AC-026-3/8	3/8
AC-026-6	6
AC-026-8	8
AC-026-10	10
AC-026-12	12

AC-027
Copper Tee branch



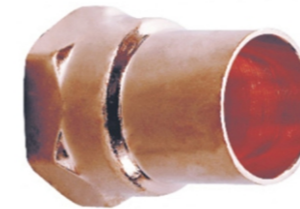
Model	Hose O.D.
AC-027-1/4	1/4
AC-027-3/8	3/8
AC-027-6	6
AC-027-8	8
AC-027-10	10
AC-027-12	12

AC-028
Copper reducer



Model	Hose O.D.
AC-028-1/4	1/4
AC-028-3/8	3/8
AC-028-6	6
AC-028-8	8
AC-028-10	10
AC-028-12	12

AC-029
Copper female plug



Model	Hose O.D.
AC-029-1/4	1/4
AC-029-3/8	3/8
AC-029-6	6
AC-029-8	8
AC-029-10	10
AC-029-12	12

AC-030
Copper plug



Model	Hose O.D.
AC-030-1/4	1/4
AC-030-3/8	3/8
AC-030-6	6
AC-030-8	8
AC-030-10	10
AC-030-12	12

AC-B
Brass air chunk



Model	Female
AC-B-1/8	1/8
AC-B-1/4	1/4
AC-B-3/8	3/8
AC-B-1/2	1/2
AC-B-3/4	3/4

AC-C-B
Brass air chunk with clamp



Model	Hose O.D.
AC-C-B-6	6
AC-C-B-8	8
AC-C-B-10	10
AC-C-B-12	12
AC-C-B-14	14
AC-C-B-16	16

AC-C-C
Steel air chunk with clamp



Model	Hose O.D.
AC-C-C-6	6
AC-C-C-8	8
AC-C-C-10	10
AC-C-C-12	12
AC-C-C-14	14
AC-C-C-16	16

BF-M
Brass male filter



Model	Male
BF-M-1/8	1/8
BF-M-1/4	1/4
BF-M-3/8	3/8
BF-M-1/2	1/2
BF-M-3/4	3/4

UJ-MF-02
Universal joint



Model	Female	Male	Hose O.D.
UJ-MF-02-1/8-1/8	1/8	1/8	1/4
UJ-MF-02-1/4-1/4	1/4	1/4	3/8
UJ-MF-02-3/8-3/8	3/8	3/8	6
UJ-MF-02-1/2-1/2	1/2	1/2	8
UJ-MF-02-3/4-3/4	3/4	3/4	10
UJ-MF-02-1-1	1	1	12