



**FOKCA**

NINGBO FOKCA AUTOMATION CO., LTD.

☎: Jeffrey Bu(Sales Manager)

📍: NO. 98 TIANGAO LANE, YINZHOU, NINGBO, CHINA

☎: 0086-574-89258005

✉: sales@fokca.com

🌐: www.fokca.com

**FOKCA**

STAINLESS STEEL FITTINGS



# Company Profile

Ningbo Fokca Automation Co., Ltd., founded in 2008, is a production-oriented enterprise specializing in fluid connection system services. We have an excellent R&D technical team, first-class production equipment, and all workshops are managed in accordance with 6S requirements. At present, there are 18 production lines, more than 2,000 equipments with an annual turnover of more than 20 million U.S. dollars, and our customers covers 80+ countries and regions worldwide.

The main products are PU tube, PU spiral tubing, PU Textile reinforced tubing, PA nylon tube, PE water purification tube, Teflon tube, other special purpose tube, one touch fitting, stainless steel push in tubing fitting, and pneumatic quick couplings. They apply to many new technology fields such as industrial automation, medical treatment, sanitary ware, automobile manufacturing, wire and cable, gardening and agricultural irrigation etc.

In order to ensure the stability of product quality, we use 100% genuine high-quality TPU, EVA and PE and other new raw materials to make our tubing's appearance shiny, smooth and flexible. In every link of product design, color matching, producing, testing, packaging, we can accurately control to ensure that our products always have excellent performance. Regarding the matching connection fittings, they are produced with lead-free environmentally friendly brass, stainless steel SUS316/SUS316L, high-quality POM. From raw materials to production process, from inspection to packaging and shipment, there are 8 quality inspection procedures totally to ensure each link perfect.

Fokca always takes health, green and environmental protection as its own responsibility. Fokca's products meet ROHS environmental protection requirements and have passed CE certification and FDA food and medical approval. In addition to standard products available in stock, we can also produce customized products for you. Sincerely looks forward to your cooperation!



# CONTENTS

- 1 Introduction** -----03
  - 1.1 Product introduction -----03
  - 1.2 Product Advantages -----03
  - 1.3 Our core competence -----04
- 2 Product parameters** -----04
  - 2.1 Specification -----04
- 3 Ordering code** -----04
  - 3.1 Fitting type -----05
  - 3.2 Tube size -----05
  - 3.3 Thread size -----05
- 4 product** -----06
  - 4.1 SPC Series Male Straight -----06
  - 4.2 SPC-G Series Male Straight -----07
  - 4.3 SPOC Series Male Round Straight -----08
  - 4.4 SPOC-G Series Male Round Straight With O Ring外牙圆形弯头 (带O型圈) -----09
  - 4.5 SPCF Series Female Straight -----10
  - 4.6 SPCF-G Series Female Straight -----11
  - 4.7 SPL Series Male Rotatable 90° Elbow -----12
  - 4.8 SPL-G Series Male Rotatable 90° Elbow With O ring可旋转外牙弯头 (带O型圈) -----13
  - 4.9 SPLF-G Series Female Rotatable 90° Elbow -----14
  - 4.10 SPV Series 90° Elbow -----15
  - 4.11 SPP Series Hose Plug -----16
  - 4.12 SPY Series Y Branch -----16
  - 4.13 SPY Series Y Branch Reducer -----17
  - 4.14 SPE Series Tee Branch -----17
  - 4.15 SPE Series Tee Branch Reducer -----18
  - 4.16 SPU Series Straight -----18
  - 4.17 SPU Series Straight Reducer -----19
  - 4.18 SPJ Series Plug-in Reducer -----19
  - 4.19 SPM Series Bulkhead Straight -----20
  - 4.20 SPMF Series Female Bulkhead Straight -----20
  - 4.21 SPML Series Rotatable Bulkhead 90° Elbow -----21

4.22	SPH Series Male Banjo Rotatable 90° Elbow	21
4.23	SPB Series Male Tee Branch	22
4.24	SPB-G Series Male Tee Branch With O Ring	23
4.25	SPD Series Male Tee Branch	24
4.26	SPD-G Series Male Tee Branch With O Ring	25
4.27	SSC Series Male Flow Speed Controller	26
4.28	SSU Series Flow Speed Controller	26
4.29	SMJ Series Male plug in fitting with O Ring	27
4.30	SPX Series Male Y Branch	28
4.31	SPX-G Series Male Y Branch With O Ring	29
4.32	SSM Series Pneumatic Muffler	30
4.33	SSV-A Series Pneumatic Muffler	30
4.34	SSV-B Series Pneumatic Muffler	31
4.35	SSV-C Series Pneumatic Muffler	31
4.36	SSV-D Series Pneumatic Muffler	32
4.37	RPC-S Series Rapid Screw Male Straight	33
4.38	RPU-S Series Rapid Screw Straight	34
4.39	RPV-S Series Rapid Screw 90° Elbow	34
4.40	RPL-SF Series Rapid Screw 90° Elbow	35
4.41	RPL-S Series Rapid Screw Rotatable 90° Elbow	36
4.42	FPL-S Series Ferrule-type Compression Male Elbow	37
4.43	FPU-S Series Ferrule-type Compression Straight	38
4.44	FPV-S Series Ferrule-type Compression 90° Elbow	38
4.45	RPL-G-S Rapid Screw Rotatable 90° Elbow With O Ring	39
4.46	FPC-S Series Ferrule-type Compression Male Straight	40
4.47	FPB-S Ferrule-type Compression Male Tee Branch	41
4.48	FPE-S Series Ferrule-type Compression Tee Branch	42
4.49	SMF Series Male-Female Universal Straight	42
<b>5</b>	<b>New Products</b>	<b>43</b>
5.1	New Products	43

## 1.1 Product introduction

This series full stainless steel fittings is a type of easily removed push in to connect fittings, which are made of full stainless steel SUS304, SS316 etc. and sealed with FKM(Viton). They are designed to work in high temperature and high pressure condition, and widely applied to food machinery industry, medical facilities, chemical and sewage treatment equipments with corrosion, metallurgical mine industry and so on.



## 1.2 Product Advantages

High temperature and high pressure resistance, corrosion resistance, oxidation resistance, big orifice with large flow rate, long life and durable service, and good sealing performance.

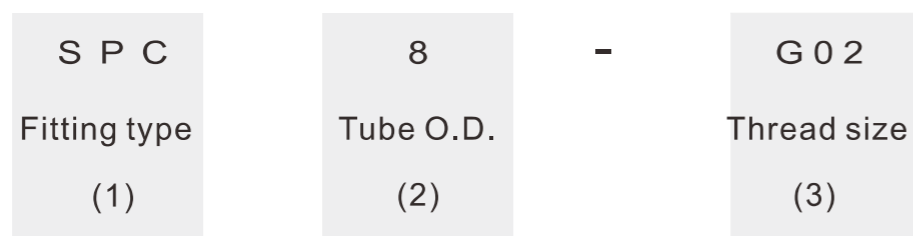
### 1.3 Our core competence

- 1.Support customization, OEM and ODM, CAD drawings can be provided according to customers' requirements.
- 2.Each product will be inspected and cleaned via ultrasonic, and dried off before shipping.
- 3.Most of parts are produced by automation equipments, each essential process is checked by specialized inspectors in order to reach the requirements of tolerance and guarantee its quality.
- 4.Varies of materials are available, such as 303,304,316,316L
- 5.Different thread types are available, such as BSP, PT, NPT, and metric thread.
- 6.With ISO9001, CE and FDA certificates.
- 7.Accept small order and quick shipping, since there are available regular sizes and models in stock.
- 8.Support customized and neutral package, such as skin packing and color box packing.

### 2.1 Specification

Item	Parameter
Working medium	Air,Steam,Water,and some other liquid
Pressure Range	0~2.0MPa
Negative Range	-100KPa
Proof Pressure	3.0MPa
Ambient Temperature	-20~120°C
Material of body	SUS304, SUS316,SUS316L
Material of sealing	FKM(Viton)
Applicable Tube	PU,PE,Nylon(PA),PVC and Teflon Tube

### 3 Ordering code



### 3.1 Fitting type

Code	Type	Code	Type	Code	Type
SPB	Male T branch	SPJ	Plug reducer	SPP	Plug
SPC	Male straight	SPK	Multiple branch	SPCF	Female straight
SPD	Male T branch	SPL	Male 90° elbow	SPU	Straight union
SPE	T branch	SPM	Bulkhead fitting	SPV	90° elbow
SPH	Banjo fitting	SPOC	Round straight	SPX	Male Y branch
SPY	Y branch	SPZA	Cross	SPLF	Female elbow
SSC	Speed control	SSU	Speed control	SPMF	Bulkhead fitting

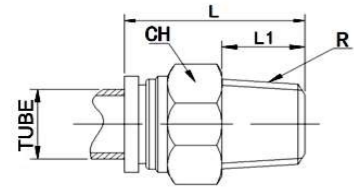
### 3.2 Tube O.D.

Metric size	04	06	08	10	12	14	16
Inch size	1/8"	5/32"	1/4"	5/16"	3/8"	1/2"	

### 3.3 Thread size

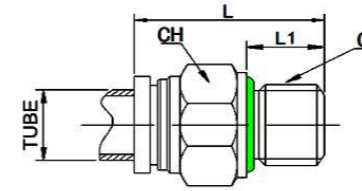
Metric	BSP	PT	NPT
M5	G01: G1/8	01: 1/8"PT	N01:1/8"NPT
M6	G02: G1/4	02: 1/4"PT	N02:1/4"NPT
M8	G03: G3/8	03: 3/8"PT	N03:3/8"NPT
M10	G04: G1/2	04: 1/2"PT	N04:1/2"NPT
M12	G06: G3/4	06: 3/4"PT	N06:3/4"NPT
M14			
M16			
M20			

## 4.1 SPC Male Straight



Model	TUBE	L1	L	CH	R
SPC4-M5	04	4	22	S11	M5x0.8
SPC4-01	04	8	20	S11	1/8"PT
SPC4-02	04	11	24	S14	1/4"PT
SPC4-03	04	11	24	S17	3/8"PT
SPC4-04	04	15	28	S22	1/2"PT
SPC6-M5	06	5	24	S11	M5x0.8
SPC6-01	06	8	23	S11	1/8"PT
SPC6-02	06	11	23	S14	1/4"PT
SPC6-03	06	11	23	S17	3/8"PT
SPC6-04	06	15	28	S22	1/2"PT
SPC8-01	08	8	25	S14	1/8"PT
SPC8-02	08	11	24	S14	1/4"PT
SPC8-03	08	11	24	S17	3/8"PT
SPC8-04	08	15	28	S22	1/2"PT
SPC10-01	10	8	28	S17	1/8"PT
SPC10-02	10	11	30	S17	1/4"PT
SPC10-03	10	11	24	S17	3/8"PT
SPC10-04	10	15	28	S22	1/2"PT
SPC12-01	12	8	28	S19	1/8"PT
SPC12-02	12	11	30	S19	1/4"PT
SPC12-03	12	11	28	S19	3/8"PT
SPC12-04	12	15	28	S22	1/2"PT
SPC14-01	14	8	28	S22	1/8"PT
SPC14-02	14	11	31	S22	1/4"PT
SPC14-03	14	11	28	S22	3/8"PT
SPC14-04	14	15	28	S22	1/2"PT
SPC16-01	16	8	28	S24	1/8"PT
SPC16-02	16	11	32	S24	1/4"PT
SPC16-03	16	11	32	S24	3/8"PT
SPC16-04	16	15	32	S24	1/2"PT

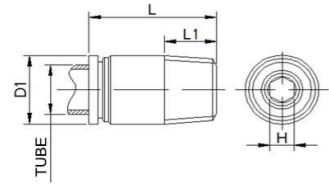
## 4.2 SPC-G Male Straight



Model	TUBE	L	L1	CH	G
SPC4-G01	04	23	6	S14	G1/8
SPC4-G02	04	23	7	S17	G1/4
SPC6-G01	06	23	6	S14	G1/8
SPC6-G02	06	24	7	S17	G1/4
SPC6-G03	06	24	9	S19	G3/8
SPC6-G04	06	25	10.5	S24	G1/2
SPC8-G01	08	25	6	S14	G1/8
SPC8-G02	08	25	7	S17	G1/4
SPC8-G03	08	25	9	S19	G3/8
SPC8-G04	08	25	10.5	S24	G1/2
SPC10-G02	10	27	7	S17	G1/4
SPC10-G03	10	25	9	S19	G3/8
SPC10-G04	10	25	10.5	S24	G1/2
SPC12-G02	12	27	7	S19	G1/4
SPC12-G03	12	25	9	S19	G3/8
SPC12-G04	12	25	10.5	S24	G1/2
SPC14-G02	14	27	7	S22	G1/4
SPC14-G03	14	27	9	S22	G3/8
SPC14-G04	14	25	10.5	S24	G1/2
SPC16-G02	16	28	7	S24	G1/4
SPC16-G03	16	28	9	S24	G3/8
SPC16-G04	16	25	10.5	S24	G1/2

### 4.3 SPOC Series

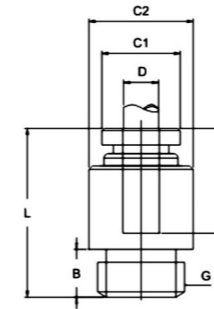
Male Round Straight



Model	TUBE	L1	D1	L	H	Thread
SPOC4-M5	04	4	10.5	24	S3	M5x0.8
SPOC4-01	04	8	10.5	20	S3	1/8"PT
SPOC4-02	04	11	10.5	21	S3	1/4"PT
SPOC6-M5	06	4	12.5	24	S3	M5x0.8
SPOC6-01	06	8	12.5	23	S4	1/8"PT
SPOC6-02	06	11	12.5	23	S4	1/4"PT
SPOC6-03	06	11	12.5	23	S4	3/8"PT
SPOC6-04	06	14	12.5	28	S4	1/2"PT
SPOC8-01	08	8	14.5	25	S5	1/8"PT
SPOC8-02	08	11	14.5	24	S6	1/4"PT
SPOC8-03	08	11	14.5	24	S6	3/8"PT
SPOC8-04	08	14	14.5	28	S6	1/2"PT
SPOC10-02	10	11	17.5	30	S8	1/4"PT
SPOC10-03	10	11	17.5	24	S8	3/8"PT
SPOC10-04	10	14	17.5	28	S8	1/2"PT
SPOC12-02	12	11	20.5	30	S8	1/4"PT
SPOC12-03	12	11	20.5	28	S10	3/8"PT
SPOC12-04	12	14	20.5	28	S10	1/2"PT
SPOC14-02	14	11	22	31	S10	1/4"PT
SPOC14-03	14	11	22	28	S10	3/8"PT
SPOC14-04	14	14	22	28	S10	1/2"PT
SPOC16-02	16	11	24	32	S10	1/4"PT
SPOC16-03	16	11	24	32	S10	3/8"PT
SPOC16-04	16	14	24	32	S12	1/2"PT

### 4.4 SPOC-G Series

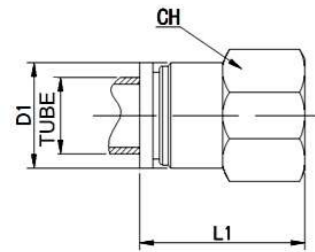
Male Round Straight With O Ring



Model	D	B	C1	C2	E	G	L
SPOC4-G01	04	5	9	12	14.7	G1/8	20.7
SPOC4-G02	04	6.5	9	16.7	14.7	G1/4	22.2
SPOC6-G01	06	5	11	12	16.4	G1/8	26.7
SPOC6-G02	06	6.5	11	16.7	16.4	G1/4	23.9
SPOC6-G03	06	8	11	19	16.4	G3/8	25.4
SPOC6-G04	06	8	11	24	16.4	G1/2	25.4
SPOC8-G01	08	5	13.7	14	16.8	G1/8	22.8
SPOC8-G02	08	6.5	13.7	16.7	16.8	G1/4	24.3
SPOC8-G03	08	8	13.7	19	16.8	G3/8	25.8
SPOC8-G04	08	8	13.7	24	16.8	G1/2	25.8
SPOC10-G01	10	5	15.5	16	18.4	G1/8	24.4
SPOC10-G02	10	6.5	15.5	16.7	18.4	G1/4	25.9
SPOC10-G03	10	8	15.5	19	18.4	G3/8	27.4
SPOC10-G04	10	8	15.5	24	18.4	G1/2	27.4
SPOC12-G02	12	6.5	18.7	19.2	19.2	G1/4	26.7
SPOC12-G03	12	8	18.7	19.2	19.2	G3/8	28.2
SPOC12-G04	12	8	18.7	24	19.2	G1/2	28.2
SPOC14-G02	14	6.5	22.6	21	20	G1/4	27.5
SPOC14-G03	14	8	22.6	21	20	G3/8	29
SPOC14-G04	14	8	22.6	24	20	G1/2	29
SPOC14-G06	14	9	22.6	29.6	20	G3/4	30
SPOC16-G03	16	8	22.6	23	19.7	G3/8	30.9
SPOC16-G04	16	8	22.6	24	19.7	G1/2	30.9
SPOC16-G06	16	9	22.6	29.6	19.7	G3/4	30.9

## 4.5 SPCF Series

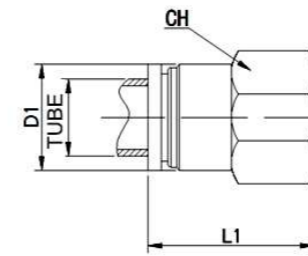
Female Straight



Model	TUBE	L1	D1	CH	Thread
SPCF4-M5	04	23	9	S11	M5x0.8
SPCF4-01	04	25	9	S11	1/8"PT
SPCF4-02	04	28	9	S17	1/4"PT
SPCF6-M5	06	23	11	S11	M5x0.8
SPCF6-01	06	26	11	S11	1/8"PT
SPCF6-02	06	29	11	S17	1/4"PT
SPCF6-03	06	29	11	S22	3/8"PT
SPCF6-04	06	33	11	S24	1/2"PT
SPCF8-01	08	27	13.6	S17	1/8"PT
SPCF8-02	08	30	13.6	S17	1/4"PT
SPCF8-03	08	30	13.6	S22	3/8"PT
SPCF8-04	08	33	13.6	S24	1/2"PT
SPCF10-02	10	31	15.6	S19	1/4"PT
SPCF10-03	10	31	15.6	S22	3/8"PT
SPCF10-04	10	34	15.6	S24	1/2"PT
SPCF12-02	12	31	18.6	S22	1/4"PT
SPCF12-03	12	31	18.6	S22	3/8"PT
SPCF12-04	12	33	18.6	S24	1/2"PT
SPCF14-02	14	31	20.6	S22	1/4"PT
SPCF14-03	14	31	20.6	S24	3/8"PT
SPCF14-04	14	33	20.6	S24	1/2"PT
SPCF16-02	16	35	22.6	S24	1/4"PT
SPCF16-03	16	32	22.6	S24	3/8"PT
SPCF16-04	16	35	22.6	S24	1/2"PT

## 4.6 SPCF-G Series

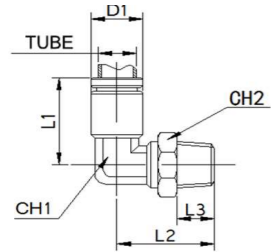
Female Straight



Model	TUBE	L1	D1	CH	Thread
SPCF4-G01	04	25	9	S11	G1/8
SPCF4-G02	04	28	9	S17	G1/4
SPCF6-G01	06	26	11	S11	G1/8
SPCF6-G02	06	29	11	S17	G1/4
SPCF6-G03	06	29	11	S22	G3/8
SPCF6-G04	06	33	11	S24	G1/2
SPCF8-G01	08	27	13.6	S17	G1/8
SPCF8-G02	08	30	13.6	S17	G1/4
SPCF8-G03	08	30	13.6	S22	G3/8
SPCF8-G04	08	33	13.6	S24	G1/2
SPCF10-G02	10	31	15.6	S19	G1/4
SPCF10-G03	10	31	15.6	S22	G3/8
SPCF10-G04	10	34	15.6	S24	G1/2
SPCF12-G02	12	31	18.6	S22	G1/4
SPCF12-G03	12	31	18.6	S22	G3/8
SPCF12-G04	12	33	18.6	S24	G1/2
SPCF14-G02	14	31	20.6	S22	G1/4
SPCF14-G03	14	31	20.6	S24	G3/8
SPCF14-G04	14	33	20.6	S24	G1/2
SPCF16-G02	16	35	22.6	S24	G1/4
SPCF16-G03	16	32	22.6	S24	G3/8
SPCF16-G04	16	35	22.6	S24	G1/2

## 4.7 SPL Series

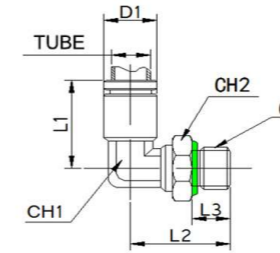
Male Rotatable 90° Elbow



Model	TUBE	L1	L2	L3	D2	CH1	CH2	Thread
SPL4-M5	04	17	19	4	10.5	9.2	S11	M5x0.8
SPL4-01	04	17	23	8	10.5	9.2	S11	1/8"PT
SPL4-02	04	17	25	11	10.5	9.2	S14	1/4"PT
SPL6-M5	06	24	25	4	12.5	9.2	S11	M5x0.8
SPL6-01	06	24	25	8	12.5	9.2	S11	1/8"PT
SPL6-02	06	24	27	11	12.5	9.2	S14	1/4"PT
SPL6-03	06	24	28	11	12.5	9.2	S17	3/8"PT
SPL6-04	06	24	30	14	12.5	9.2	S22	1/2"PT
SPL8-01	08	27	25	8	14.5	11.2	S14	1/8"PT
SPL8-02	08	27	27	11	14.5	11.2	S14	1/4"PT
SPL8-03	08	27	28	11	14.5	11.2	S17	3/8"PT
SPL8-04	08	27	30	14	14.5	11.2	S22	1/2"PT
SPL10-02	10	30.5	38	11	17.5	13.2	S17	1/4"PT
SPL10-03	10	30.5	29	11	17.5	13.2	S17	3/8"PT
SPL10-04	10	30.5	31	14	17.5	13.2	S22	1/2"PT
SPL12-02	12	34	30.5	11	20.5	15.5	S19	1/4"PT
SPL12-03	12	34	31.5	11	20.5	15.5	S19	3/8"PT
SPL12-04	12	34	33.5	14	20.5	15.5	S22	1/2"PT
SPL14-02	14	37	32	11	22	20.6	S22	1/4"PT
SPL14-03	14	37	33	11	22	20.6	S22	3/8"PT
SPL14-04	14	37	35	14	22	20.6	S22	1/2"PT
SPL16-02	16	38	32	11	24	20.6	S22	1/4"PT
SPL16-03	16	38	33	11	24	20.6	S22	3/8"PT
SPL16-04	16	38	35	14	24	20.6	S22	1/2"PT

## 4.8 SPL-G Series

Male Rotatable 90° Elbow With O ring

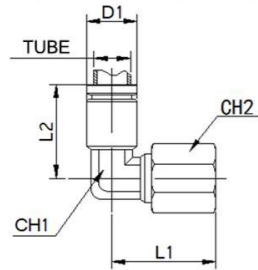


Model	TUBE	L1	L2	D1	L3	G	CH1	Ch2
SPL4-G01	04	17	20	9	6	G1/8	9.2	S14
SPL4-G02	04	17	21	9	7	G1/4	9.2	S17
SPL6-G01	06	24	20	11	6	G1/8	9.2	S14
SPL6-G02	06	24	21	11	7	G1/4	9.2	S17
SPL6-G03	06	24	21	11	7	G3/8	9.2	S19
SPL6-G04	06	24	22	11	8	G1/2	9.2	S24
SPL8-G01	08	27	21.5	13.6	6	G1/8	11.2	S14
SPL8-G02	08	27	22.5	13.6	7	G1/4	11.2	S17
SPL8-G03	08	27	22.5	13.6	7	G3/8	11.2	S19
SPL8-G04	08	27	23.5	13.6	8	G1/2	11.2	S24
SPL10-G01	10	30.5	24	15.6	6	G1/8	13.2	S17
SPL10-G02	10	30.5	25	15.6	7	G1/4	13.2	S17
SPL10-G03	10	30.5	25	15.6	7	G3/8	13.2	S19
SPL10-G04	10	30.5	26	15.6	8	G1/2	13.2	S24
SPL12-G02	12	34	29	18.6	7	G1/4	15.5	S19
SPL12-G03	12	34	29	18.6	7	G3/8	15.5	S19
SPL12-G04	12	34	30	18.6	8	G1/2	15.5	S24
SPL14-G02	14	37	33	20.6	7	G1/4	20.6	S24
SPL14-G03	14	37	33	20.6	7	G3/8	20.6	S24
SPL14-G04	14	37	34	20.6	8	G1/2	20.6	S24
SPL16-G02	16	38	30	22.6	7	G1/4	20.6	S24
SPL16-G03	16	38	30	22.6	7	G3/8	20.6	S24
SPL16-G04	16	38	31	22.6	8	G1/2	20.6	S24



## 4.9 SPLF-G Series

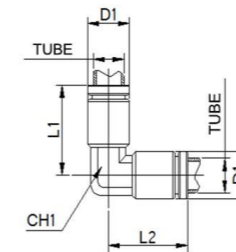
Female Rotatable 90° Elbow



Model	TUBE	L1	L2	D1	CH1	CH2	Thread
SPLF4-M5	04	25.5	17	10.5	9.2	11	M5x0.8
SPLF4-G01	04	27.5	17	10.5	9.2	12	G1/8
SPLF4-G02	04	29.5	17	10.5	9.2	17	G1/4
SPLF6-M5	06	25	24	12.5	9.2	11	M5x0.8
SPLF6-G01	06	27	24	12.5	9.2	12	G1/8
SPLF6-G02	06	28	24	12.5	9.2	17	G1/4
SPLF6-G03	06	30	24	12.5	9.2	19	G3/8
SPLF6-G04	06	25	24	12.5	9.2	24	G1/2
SPLF8-G01	08	27	27	14.5	11.2	14	G1/8
SPLF8-G02	08	28	27	14.5	11.2	17	G1/4
SPLF8-G03	08	30	27	14.5	11.2	19	G3/8
SPLF8-G04	08	28	27	14.5	11.2	24	G1/2
SPLF10-G02	10	29	30.5	17.5	13.2	17	G1/4
SPLF10-G03	10	31	30.5	17.5	13.2	19	G3/8
SPLF10-G04	10	30.5	30.5	17.5	13.2	24	G1/2
SPLF12-G02	12	31.5	34	20.5	15.5	19	G1/4
SPLF12-G03	12	33.5	34	20.5	15.5	19	G3/8
SPLF12-G04	12	32	34	20.5	15.5	24	G1/2
SPLF14-G02	14	33	37	22	20.6	22	G1/4
SPLF14-G03	14	35	37	22	20.6	22	G3/8
SPLF14-G04	14	32	37	22	20.6	24	G1/2
SPLF16-G02	16	33	38	24	20.6	22	G1/4
SPLF16-G03	16	35	38	24	20.6	22	G3/8
SPLF16-G04	16	35	38	24	20.6	24	G1/2

## 4.10 SPV Series

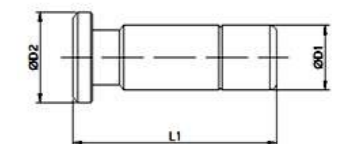
90° Elbow



Model	TUBE	L1	L2	D1	CH1
SPV4	04	17	17	9	9.2
SPV6	06	19	19	11	9.2
SPV8	08	22	22	13.6	11.2
SPV10	10	26	26	15.6	13.2
SPV12	12	29	29	18.6	15.5
SPV14	14	31	31	20.6	20.6
SPV16	16	35	35	22.6	20.6

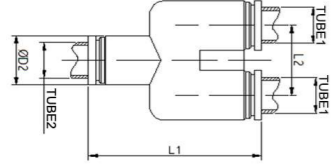
## 4.11 SPP Series

Hose Plug



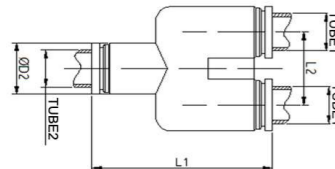
Model	D1	D2	L1
SPP04	6	04	28
SPP06	8	06	33
SPP08	10	08	37
SPP10	12	10	42
SPP12	14	12	44
SPP14	16	14	46
SPP16	18	15	49

## 4.12 SPY Series Y Branch



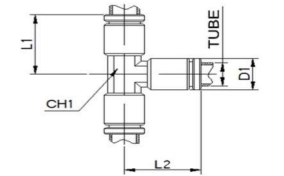
Model	TUBE1	TUBE2	L1	L2	D2
SPY4	04	04	38	12	9
SPY6	06	06	42	14	11
SPY8	08	08	46	16	13.6
SPY10	10	10	51	20	15.6
SPY12	12	12	60	24	18.6

## 4.13 SPY Series Y Branch Reducer



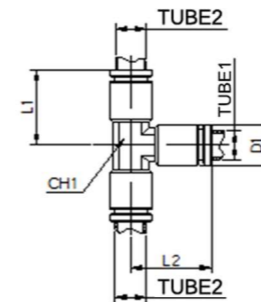
Model	TUBE1	TUBE2	L1	L2	D2
SPY4-4-6	6	4	37.5	16	13
SPY4-4-8	8	4	41.3	18	15
SPY6-6-8	8	6	41.3	18	15
SPY6-6-10	10	6	44.3	21	18
SPY8-8-10	10	8	44.3	21	18
SPY8-8-12	12	8	51	24	21
SPY10-10-12	12	10	51	24	21

## 4.14 SPE Series Tee Branch



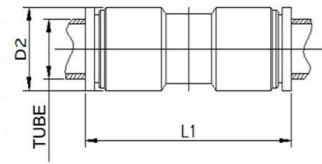
Model	TUBE	L1	L2	D1	CH
SPE4	04	17	17	9	9.2
SPE6	06	20	20	11	9.2
SPE8	08	22	22	13.6	11.2
SPE10	10	27	27	15.6	13.2
SPE12	12	29	29	18.6	15.5
SPE14	14	31	31	20.6	20.6
SPE16	16	35	35	22.6	20.6

## 4.15 SPE Series Tee Branch Reducer



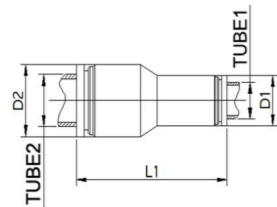
Model	TUBE1	TUBE2	L1	D1	D2	CH
SPE6-6-4	4	6	20	9	11	9.2
SPE8-8-4	4	8	22	9	13.6	11.2
SPE8-8-6	6	8	22	11	13.6	11.2
SPE10-10-6	6	10	27	11	15.6	13.2
SPE10-10-8	8	10	27	13.6	15.6	13.2
SPE12-12-8	8	12	29	13.6	18.6	15.5
SPE12-12-10	10	12	29	15.6	18.6	15.5
SPE14-14-10	10	14	31	15.6	20.6	20.6
SPE14-14-12	12	14	31	18.6	20.6	20.6
SPE16-16-12	12	16	35	18.6	22.6	20.6
SPE16-16-14	14	16	35	20.6	22.6	20.6

## 4.16 SPU Series Straight



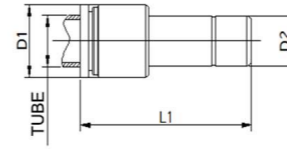
Model	TUBE	L1	D2
SPU4	04	32	10
SPU6	06	34	12
SPU8	08	36	14
SPU10	10	38	16
SPU12	12	40	19
SPU14	14	40	21
SPU16	16	42	23

## 4.17 SPU Series Straight Reducer



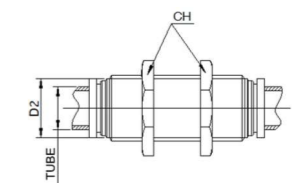
Model	TUBE1	TUBE2	D1	D2	L1
SPU4-6	04	06	9	11	33
SPU4-8	04	08	9	13.6	34
SPU06-8	06	08	11	13.6	35
SPU6-10	06	10	11	15.6	36
SPU8-10	08	10	13.6	15.6	37
SPU8-12	08	12	13.6	18.6	37
SPU10-12	10	12	15.6	18.6	38
SPU10-14	10	14	15.6	20.6	38
SPU12-14	12	14	18.6	20.6	38
SPU12-16	12	16	18.6	22.6	39
SPU14-16	14	16	20.6	22.6	39

## 4.18 SPJ Series Plug-in Reducer



Model	TUBE	D1	D2	L1
SPJ6-04	04	11	4	36
SPJ8-06	08	13.6	6	41
SPJ8-04	08	13.6	4	38
SPJ10-08	10	15.6	8	42
SPJ10-06	10	15.6	6	42
SPJ12-10	12	18.6	10	42
SPJ12-06	12	18.6	6	42
SPJ14-12	14	20.6	12	42
SPJ14-10	14	20.6	10	42
SPJ16-14	16	22.6	14	46
SPJ16-12	16	22.6	12	46

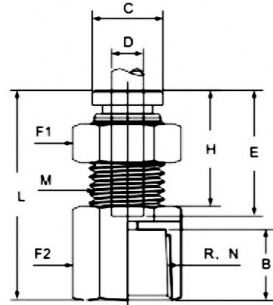
## 4.19 SPM Series Bulkhead Straight



Model	TUBE	L1	D2	CH
SPM4	04	32	12	S17
SPM6	06	34	13	S17
SPM8	08	36	15	S19
SPM10	10	38	17	S22
SPM12	12	40	19	S24
SPM14	14	40	22	S27
SPM16	16	42	23	S27

## 4.20 SPMF Series

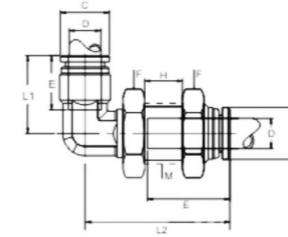
### Female Bulkhead Straight



Model	B	C	D	E	F1	F2	R	M	H	L
SPMF4-01	9	9	4	14.7	S14	S14	1/8"	M11x1	15.5	24.7
SPMF4-02	12	9	4	14.7	S14	S17	1/4"	M11x1	15.5	27.7
SPMF6-01	9	11	6	16.4	S14	S12	1/8"	M13x1	15.9	26.9
SPMF6-02	12	11	6	16.4	S14	S17	1/4"	M13x1	15.9	29.9
SPMF6-03	12	11	6	16.4	S14	S19	3/8"	M13x1	15.9	29.9
SPMF6-04	15.5	11	6	16.4	S14	S24	1/2"	M13x1	15.9	33.9
SPMF8-01	9	13.7	8	16.8	S17	S17	1/8"	M15x1	17.3	27.9
SPMF8-02	12	13.7	8	16.8	S17	S17	1/4"	M15x1	17.3	31.2
SPMF8-03	12	13.7	8	16.8	S17	S19	3/8"	M15x1	17.3	31.2
SPMF8-04	15.5	13.7	8	16.8	S17	S24	1/2"	M15x1	17.3	35.3
SPMF10-01	9	15.5	10	18.4	S19	S17	1/8"	M17x1	19	29.2
SPMF10-02	12	15.5	10	18.4	S19	S17	1/4"	M17x1	19	32.6
SPMF10-03	12	15.5	10	18.4	S19	S19	3/8"	M17x1	19	32.6
SPMF10-04	15.5	15.5	10	18.4	S19	S24	1/2"	M17x1	19	37
SPMF12-02	12	18.7	12	19.2	S22	S22	1/4"	M20x1	19.2	33.1
SPMF12-03	12	18.7	12	19.2	S22	S22	3/8"	M20x1	19.2	33.1
SPMF12-04	15.5	18.7	12	19.2	S22	S24	1/2"	M20x1	19.2	36.3

## 4.21 SPML Series

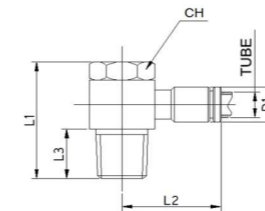
### Rotatable Bulkhead 90° Elbow



Model	C	D	E	F	H	L1	L2	M
SPML4	9	04	14.7	S14	10	16.9	33	M11x1
SPML6	11	06	16.4	S14	10	21.1	33.9	M13x1
SPML8	13.7	08	16.8	S17	10	22	36.4	M15x1
SPML10	15.5	10	18.4	S17	10	24.6	42.3	M17x1
SPML12	18.7	12	19.2	S22	10.3	28.8	40.2	M20x1

## 4.22 SPH Series

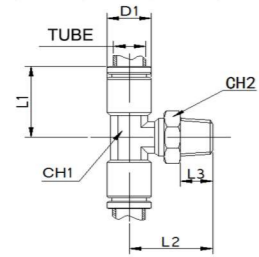
### Male Banjo Rotatable 90° Elbow



Model	TUBE	L3	L1	L2	D1	Thread
SPH4-01	04	8	26	26	9	1/8"PT
SPH4-02	04	11	30	27	9	1/4"PT
SPH6-01	06	8	26	26	11	1/8"PT
SPH6-02	06	11	30	28	11	1/4"PT
SPH8-01	08	8	26	30	13.6	1/8"PT
SPH8-02	08	11	30	31	13.6	1/4"PT
SPH8-03	08	11	30	34	13.6	3/8"PT
SPH8-04	08	14	40	35	13.6	1/2"PT
SPH10-02	10	11	30	35	15.6	1/4"PT
SPH10-03	10	11	30	35	15.6	3/8"PT
SPH10-04	10	14	40	35	15.6	1/2"PT
SPH12-02	12	11	30	36	18.6	1/4"PT
SPH12-03	12	11	30	38	18.6	3/8"PT
SPH12-04	12	14	40	38	18.6	1/2"PT

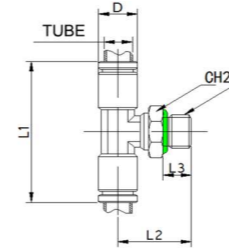
## 4.23 SPB Series

### Male Tee Branch



## 4.24 SPB-G Series

### Male Tee Branch With O Ring

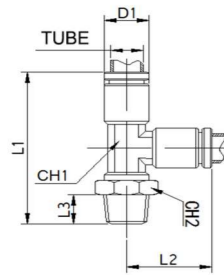


Model	TUBE	L1	L2	L3	D2	CH1	CH2	Thread
SPB4-M5	04	17	14	4	10.5	9.2	S11	M5x0.8
SPB4-01	04	17	17.5	8	10.5	9.2	S11	1/8"PT
SPB4-02	04	17	19.5	11	10.5	9.2	S14	1/4"PT
SPB6-M5	06	20	14	4	12.5	9.2	S12	M5x0.8
SPB6-01	06	20	19	8	12.5	9.2	S12	1/8"PT
SPB6-02	06	20	21	11	12.5	9.2	S14	1/4"PT
SPB6-03	06	20	21	11	12.5	9.2	S17	3/8"PT
SPB6-04	06	20	24	14	12.5	9.2	S22	1/2"PT
SPB8-01	08	22	21	8	14.5	11.2	S14	1/8"PT
SPB8-02	08	22	23	11	14.5	11.2	S14	1/4"PT
SPB8-03	08	22	23	11	14.5	11.2	S17	3/8"PT
SPB8-04	08	22	26	14	14.5	11.2	S22	1/2"PT
SPB10-02	10	26.5	28	11	17.5	13.2	S17	1/4"PT
SPB10-03	10	26.5	28	11	17.5	13.2	S17	3/8"PT
SPB10-04	10	26.5	31	14	17.5	13.2	S22	1/2"PT
SPB12-02	12	29	30.5	11	20.5	15.5	S19	1/4"PT
SPB12-03	12	29	32.5	11	20.5	15.5	S19	3/8"PT
SPB12-04	12	29	35.5	14	20.5	15.5	S22	1/2"PT
SPB14-02	14	33	33	11	22	20.6	S22	1/4"PT
SPB14-03	14	33	33	11	22	20.6	S22	3/8"PT
SPB14-04	14	33	36	14	22	20.6	S22	1/2"PT
SPB16-02	16	35	35	11	24	20.6	S22	1/4"PT
SPB16-03	16	35	35	11	24	20.6	S22	3/8"PT
SPB16-04	16	35	38	14	24	20.6	S22	1/2"PT

Model	TUBE	L2	L1	ΦD	L3	G	CH2
SPB4-G01	04	24	46	10.5	6	G1/8	S14
SPB4-G02	04	27	46	10.5	7	G1/4	S17
SPB6-G01	06	25	48	12.5	6	G1/8	S14
SPB6-G02	06	28	48	12.5	7	G1/4	S17
SPB6-G03	06	29	48	12.5	7	G3/8	S19
SPB6-G04	06	34	48	12.5	12	G1/2	S24
SPB8-G01	08	28	54	14.5	6	G1/8	S14
SPB8-G02	08	31	54	14.5	7	G1/4	S17
SPB8-G03	08	33	54	14.5	8	G3/8	S19
SPB8-G04	08	35	54	14.5	12	G1/2	S24
SPB10-G01	10	33	61	17.5	6	G1/8	S17
SPB10-G02	10	36	61	17.5	7	G1/4	S17
SPB10-G03	10	37	61	17.5	7	G3/8	S19
SPB10-G04	10	41	61	17.5	12	G1/2	S24
SPB12-G02	12	38	68	20.5	7	G1/4	S19
SPB12-G03	12	38	68	20.5	7	G3/8	S19
SPB12-G04	12	41	68	20.5	12	G1/2	S24
SPB14-G02	14	39.5	76	22	7	G1/4	S24
SPB14-G03	14	40	76	22	7	G3/8	S24
SPB14-G04	14	43	76	22	12	G1/2	S24
SPB16-G02	16	39.5	76	24	7	G1/4	S24
SPB16-G03	16	40	76	24	7	G3/8	S24
SPB16-G04	16	43	76	24	12	G1/2	S24

## 4.25 SPD Series

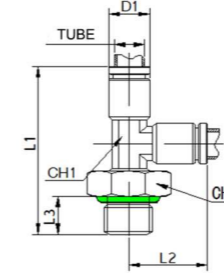
### Male Tee Branch



Model	TUBE	L1	L2	L3	D1	CH1	Ch2	Thread
SPD4-M5	04	34	14	4	10.5	9.2	S11	M5x0.8
SPD4-01	04	34	17.5	8	10.5	9.2	S11	1/8"PT
SPD4-02	04	34	19.5	11	10.5	9.2	S14	1/4"PT
SPD6-M5	06	40	14	4	12.5	9.2	S12	M5x0.8
SPD6-01	06	40	19	8	12.5	9.2	S12	1/8"PT
SPD6-02	06	40	21	11	12.5	9.2	S14	1/4"PT
SPD6-03	06	40	21	11	12.5	9.2	S17	3/8"PT
SPD6-04	06	40	24	14	12.5	9.2	S22	1/2"PT
SPD8-01	08	44	21	8	14.5	11.2	S14	1/8"PT
SPD8-02	08	44	23	11	14.5	11.2	S14	1/4"PT
SPD8-03	08	44	23	11	14.5	11.2	S17	3/8"PT
SPD8-04	08	44	26	14	14.5	11.2	S22	1/2"PT
SPD10-02	10	53	28	11	17.5	13.2	S17	1/4"PT
SPD10-03	10	53	28	11	17.5	13.2	S17	3/8"PT
SPD10-04	10	53	31	14	17.5	13.2	S22	1/2"PT
SPD12-02	12	58	30.5	11	20.5	15.5	S19	1/4"PT
SPD12-03	12	58	32.5	11	20.5	15.5	S19	3/8"PT
SPD12-04	12	58	35.5	14	20.5	15.5	S22	1/2"PT
SPD14-02	14	66	33	11	22	20.6	S22	1/4"PT
SPD14-03	14	66	33	11	22	20.6	S22	3/8"PT
SPD14-04	14	66	36	14	22	20.6	S22	1/2"PT
SPD16-02	16	70	35	11	24	20.6	S22	1/4"PT
SPD16-03	16	70	35	11	24	20.6	S22	3/8"PT
SPD16-04	16	70	38	14	24	20.6	S22	1/2"PT

## 4.26 SPD-G Series

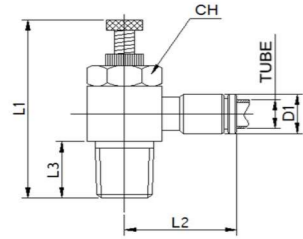
### Male Tee Branch With O Ring



Model	TUBE	L1	L2	L3	D1	CH1	CH2	Thread
SPD4-G01	04	34	17.5	6	10.5	9.2	S14	G1/8
SPD4-G02	04	34	19.5	7	10.5	9.2	S17	G1/4
SPD6-G01	06	40	19	6	12.5	9.2	S14	G1/8
SPD6-G02	06	40	21	7	12.5	9.2	S17	G1/4
SPD6-G03	06	40	21	7	12.5	9.2	S19	G3/8
SPD6-G04	06	40	24	12	12.5	9.2	S24	G1/2
SPD8-G01	08	44	21	6	14.5	11.2	S14	G1/8
SPD8-G02	08	44	23	7	14.5	11.2	S17	G1/4
SPD8-G03	08	44	23	7	14.5	11.2	S19	G3/8
SPD8-G04	08	44	26	12	14.5	11.2	S24	G1/2
SPD10-G02	10	53	28	7	17.5	13.2	S17	G1/4
SPD10-G03	10	53	28	7	17.5	13.2	S19	G3/8
SPD10-G04	10	53	31	12	17.5	13.2	S24	G1/2
SPD12-G02	12	58	30.5	7	20.5	15.5	S19	G1/4
SPD12-G03	12	58	32.5	7	20.5	15.5	S19	G3/8
SPD12-G04	12	58	35.5	12	20.5	15.5	S24	G1/2
SPD14-G02	14	66	33	7	22	20.6	S24	G1/4
SPD14-G03	14	66	33	7	22	20.6	S24	G3/8
SPD14-G04	14	66	36	12	22	20.6	S24	G1/2
SPD16-G02	16	70	35	7	24	20.6	S24	G1/4
SPD16-G03	16	70	35	7	24	20.6	S24	G3/8
SPD16-G04	16	70	38	12	24	20.6	S24	G1/2

## 4.27 SSC Series

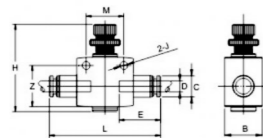
Male Flow Speed Controller



Model	TUBE	L1	L2	L3	D2	CH	Thread
SSC4-01	04	39	28	7.5	10.5	S12	G1/8
SSC4-02	04	45	30	9.5	10.5	S14	G1/4
SSC6-01	06	39	28	7.5	12.5	S12	G1/8
SSC6-02	06	45	30	9.5	12.5	S14	G1/4
SSC8-01	08	39	30	7.5	14.5	S12	G1/8
SSC8-02	08	45	32	9.5	14.5	S14	G1/4
SSC8-03	08	56	33	10.5	14.5	S19	G3/8
SSC8-04	08	56	35	12.5	14.5	S22	G1/2
SSC10-02	10	45	34	9.5	17.5	S14	G1/4
SSC10-03	10	56	35	10.5	17.5	S19	G3/8
SSC10-04	10	56	37	12.5	17.5	S22	G1/2
SSC12-02	12	45	36	9.5	20.5	S14	G1/4
SSC12-03	12	56	38	10.5	20.5	S19	G3/8
SSC12-04	12	56	40	12.5	20.5	S22	G1/2

## 4.28 SSU Series

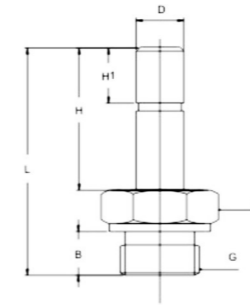
Flow Speed Controller



Model	M	C	D	B	E	J	H	L
SSU4	14	9	04	15	14.7	3.2	29	42
SSU6	20	11	06	16	16.4	4.2	40	52
SSU8	20	13.7	08	16	16.8	4.2	40	56
SSU10	26	15.5	10	22	18.4	4.2	53	69
SSU12	32	18.7	12	25	19.2	4.2	58	78

## 4.29 SMJ Series

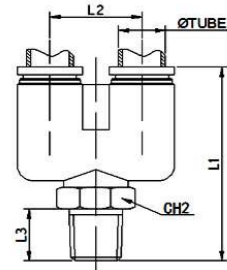
Male plug in fitting with O Ring



Model	D	B	F	H	H1	G	L
SMJ4-M5	04	5	S10	17.5	5.5	M5x0.8	27.5
SMJ4-G01	04	5	S12	17.5	5.5	G1/8	28.5
SMJ4-G02	04	6.5	S17	17.5	5.5	G1/4	31.5
SMJ6-M5	06	5	S12	18	7	M5x0.8	28
SMJ6-G01	06	5	S14	18	7	G1/8	29
SMJ6-G02	06	6.5	S17	18	7	G1/4	32
SMJ6-G03	06	8	S19	18	7	G3/8	33.5
SMJ6-G04	06	8	S24	18	7	G1/2	33.5
SMJ8-G01	08	5	S14	21	7	G1/8	32
SMJ8-G02	08	6.5	S17	21	7	G1/4	35
SMJ8-G03	08	8	S19	21	7	G3/8	36.5
SMJ8-G04	08	8	S24	21	7	G1/2	36.5
SMJ10-G01	10	5	S17	21	7	G1/8	32
SMJ10-G02	10	6.5	S19	21	7	G1/4	35
SMJ10-G03	10	8	S19	21	7	G3/8	36.5
SMJ10-G04	10	8	S24	21	7	G1/2	36.5
SMJ12-G02	12	6.5	S19	21	7	G1/4	35
SMJ12-G03	12	8	S19	21	7	G3/8	36.5
SMJ12-G04	12	8	S24	21	7	G1/2	36.5
SMJ14-G03	14	8	S19	21	7	G3/8	35
SMJ14-G04	14	8	S24	21	7	G1/2	36.5
SMJ14-G06	14	9	S30	21	7	G3/4	38

### 4.30 SPX Series

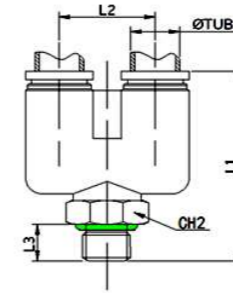
Male Y Branch



Model	TUBE	L1	L2	L3	CH2	Thread
SPX4-01	04	45	12	8	S12	1/8"PT
SPX4-02	04	47	12	11	S14	1/4"PT
SPX4-03	04	47	12	11	S19	3/8"PT
SPX4-04	04	49	12	14	S22	1/2"PT
SPX6-01	06	46.5	14	8	S12	1/8"PT
SPX6-02	06	48	14	11	S14	1/4"PT
SPX6-03	06	48	14	11	S19	3/8"PT
SPX6-04	06	50	14	14	S22	1/2"PT
SPX8-01	08	46	16	8	S14	1/8"PT
SPX8-02	08	48	16	11	S14	1/4"PT
SPX8-03	08	48	16	11	S19	3/8"PT
SPX8-04	08	50	16	14	S22	1/2"PT
SPX10-01	10	51	20	8	S17	1/8"PT
SPX10-02	10	53	20	11	S17	1/4"PT
SPX10-03	10	53	20	11	S19	3/8"PT
SPX10-04	10	55	20	14	S22	1/2"PT
SPX12-01	12	60	24	8	S22	1/8"PT
SPX12-02	12	62	24	11	S22	1/4"PT
SPX12-03	12	62	24	11	S22	3/8"PT
SPX12-04	12	64	24	14	S22	1/2"PT

### 4.31 SPX-G Series

Male Y Branch With O Ring

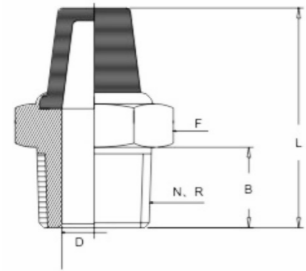


Model	TUBE	L1	L2	L3	CH2	G
SPX4-G01	04	43	12	6	S14	G1/8
SPX4-G02	04	43	12	7	S17	G1/4
SPX4-G03	04	43	12	7	S19	G3/8
SPX4-G04	04	44	12	12	S24	G1/2
SPX6-G01	06	44.5	14	6	S14	G1/8
SPX6-G02	06	44	14	7	S17	G1/4
SPX6-G03	06	44	14	7	S19	G3/8
SPX6-G04	06	45	14	12	S24	G1/2
SPX8-G01	08	44	16	6	S14	G1/8
SPX8-G02	08	44	16	7	S17	G1/4
SPX8-G03	08	44	16	7	S19	G3/8
SPX8-G04	08	45	16	12	S24	G1/2
SPX10-G01	10	49	20	6	S17	G1/8
SPX10-G02	10	49	20	7	S17	G1/4
SPX10-G03	10	49	20	7	S19	G3/8
SPX10-G04	10	50	20	12	S24	G1/2
SPX12-G01	12	58	24	6	S24	G1/8
SPX12-G02	12	58	24	7	S24	G1/4
SPX12-G03	12	58	24	7	S24	G3/8
SPX12-G04	12	59	24	12	S24	G1/2



### 4.32 SSM Series

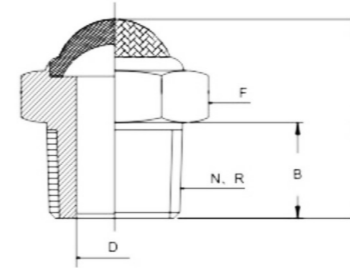
Pneumatic Muffler



Model	D	B	F	L	R
SSM-M5	2.5	5	S10	22.6	M5
SSM-01	6	7	S12	25	G1/8
SSM-02	9	9.2	S17	34	G1/4
SSM-03	10	10.2	S19	40.8	G3/8
SSM-04	15	12.7	S22	45.3	G1/2
SSM-06	18.5	15	S27	52.6	G3/4
SSM-08	Customization				G1
SSM-12					G1 1/2

### 4.34 SSV-B Series

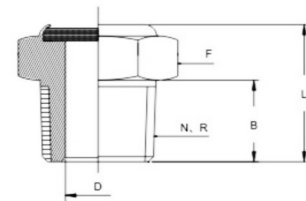
Pneumatic Muffler



Model	D	B	F	L	R
SSV-B-01	6	7	S12	15	G1/8
SSV-B-02	8	9.2	S17	20.7	G1/4
SSV-B-03	10	10.2	S19	20.6	G3/8
SSV-B-04	15	12.7	S22	25.5	G1/2
SSV-B-06	18.5	15	S27	27.7	G3/4
SSV-B-08	Customization				G1
SSV-B-12					G1 1/2

### 4.33 SSV-A Series

Pneumatic Muffler



Model	D	B	F	L	R
SSV-A-01	5	7	S12	12.5	G1/8
SSV-A-02	8	9.2	S17	15.8	G1/4
SSV-A-03	10	10.2	S19	17	G3/8
SSV-A-04	15	12.7	S22	20	G1/2
SSV-A-06	20	15	S27	22.3	G3/4
SSV-A-08	24	15	S34	25.3	G1
SSV-A-12	38	15	S50	24.3	G1 1/2

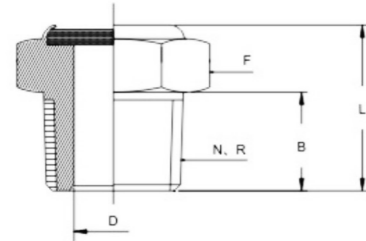
### 4.35 SSV-C Series

Pneumatic Muffler



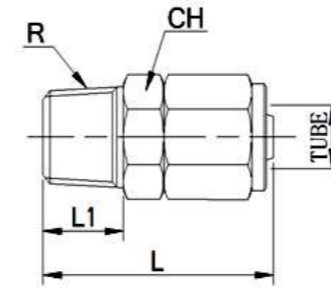
Model	D	B	F	L	R
SSV-C-01	5	7	S12	12.5	G1/8
SSV-C-02	8	9.2	S17	15.8	G1/4
SSV-C-03	10	10.2	S19	17	G3/8
SSV-C-04	15	12.7	S22	20	G1/2
SSV-C-06	20	15	S27	22.3	G3/4
SSV-C-08	24	15	S34	25.3	G1
SSV-C-12	38	15	S50	24.3	G1 1/2

### 4.36 SSV-D Series Pneumatic Muffler



Model	D	B	F	L	R
SSV-D-01	6	7	S12	12.5	G1/8
SSV-D-02	9	9.2	S17	15.8	G1/4
SSV-D-03	10	10.2	S19	17	G3/8
SSV-D-04	15	12.7	S22	20	G1/2
SSV-D-06	18.5	15	S27	22.3	G3/4
SSV-D-08	20	15	S34	25.3	G1
SSV-D-12	Customization				G1 1/2

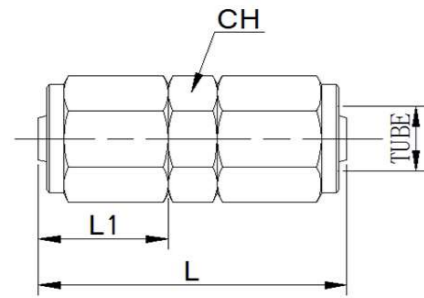
### 4.37 RPC-S Series Rapid Screw Male Straight



Model	TUBE	L	L1	CH	R
RPC4-01-S	04	25	8	S12	1/8"PT
RPC4-02-S	04	28	11	S14	1/4"PT
RPC4-03-S	04	28	11	S17	3/8"PT
RPC4-04-S	04	32	15	S22	1/2"PT
RPC6-01-S	06	27	8	S12	1/8"PT
RPC6-02-S	06	30	11	S14	1/4"PT
RPC6-03-S	06	30	11	S17	3/8"PT
RPC6-04-S	06	34	15	S22	1/2"PT
RPC8-01-S	08	28	8	S14	1/8"PT
RPC8-02-S	08	31	11	S14	1/4"PT
RPC8-03-S	08	31	11	S17	3/8"PT
RPC8-04-S	08	35	15	S22	1/2"PT
RPC10-01-S	10	28	8	S17	1/8"PT
RPC10-02-S	10	31	11	S17	1/4"PT
RPC10-03-S	10	31	11	S17	3/8"PT
RPC10-04-S	10	35	15	S22	1/2"PT
RPC12-01-S	12	29	8	S19	1/8"PT
RPC12-02-S	12	32	11	S19	1/4"PT
RPC12-03-S	12	32	11	S19	3/8"PT
RPC12-04-S	12	36	15	S22	1/2"PT

### 4.38 RPU-S Series

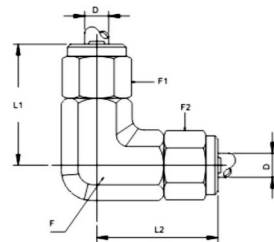
Rapid Screw Straight



Model	TUBE	L	L1	CH
RPU4-S	04	25	8.5	S12
RPU6-S	06	28	10	S12
RPU8-S	08	32	11	S14
RPU10-S	10	34	11	S17
RPU12-S	12	36	12	S19
RPU14-S	14	38	12	S19

### 4.39 RPV-S Series

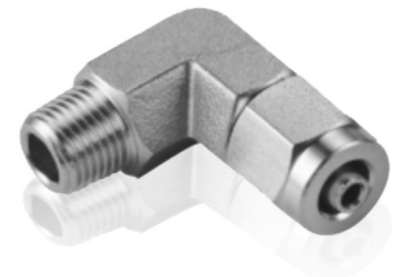
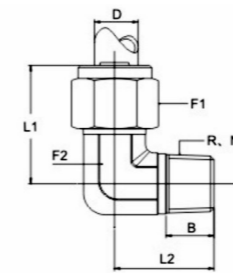
Rapid Screw 90° Elbow



Model	D	F	F1	F2	L1	L2
RPV-04-S	04	S11	S10	S10	20.2	20.2
RPV-06-S	06	S11	S12	S12	23.7	23.7
RPV-08-S	08	S12	S14	S14	25.1	25.1
RPV-10-S	10	S13	S17	S17	27.1	27.1
RPV-12-S	12	S16	S19	S19	28.9	28.9
RPV-14-S	14	S19	S22	S22	30.8	30.8
RPV-16-S	16	S19	S22	S22	32.1	32.1

### 4.40 RPL-SF Series

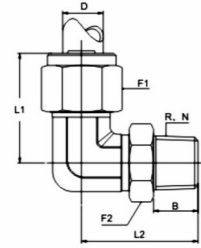
Rapid Screw 90° Elbow



Model	D	B	F1	F2	L1	L2	R,N
RPL4-01-SF	04	8	S10	S11	20.2	23.3	1/8"PT
RPL4-02-SF	04	11	S10	S11	20.2	26.8	1/4"PT
RPL6-01-SF	06	8	S12	S11	25.1	23.2	1/8"PT
RPL6-02-SF	06	11	S12	S11	25.1	26.7	1/4"PT
RPL6-03-SF	06	11	S12	S11	25.1	27.2	3/8"PT
RPL8-01-SF	08	8	S14	S12	25.6	23.2	1/8"PT
RPL8-02-SF	08	11	S14	S12	25.6	26.7	1/4"PT
RPL8-03-SF	08	11	S14	S12	25.6	27.2	3/8"PT
RPL10-01-SF	10	8	S17	S13	27.2	24.8	1/8"PT
RPL10-02-SF	10	11	S17	S13	27.2	28.8	1/4"PT
RPL10-03-SF	10	11	S17	S13	27.2	28.8	3/8"PT
RPL10-04-SF	10	14.5	S17	S13	27.2	32.3	1/2"PT
RPL12-02-SF	12	11	S19	S16	28.9	30.8	1/4"PT
RPL12-03-SF	12	11	S19	S16	28.9	34.2	3/8"PT
RPL12-04-SF	12	14.5	S19	S16	28.9	35.7	1/2"PT
RPL14-02-SF	14	11	S22	S19	30.8	32.1	1/4"PT
RPL14-03-SF	14	11	S22	S19	30.8	32.6	3/8"PT
RPL14-04-SF	14	14.5	S22	S19	30.8	36.1	1/2"PT
RPL16-02-SF	16	13	S22	S19	30.8	32.1	1/4"PT
RPL16-03-SF	16	11	S22	S19	32.1	32.6	3/8"PT
RPL16-04-SF	16	14.5	S22	S19	32.1	36.1	1/2"PT

## 4.41 RPL-S Series

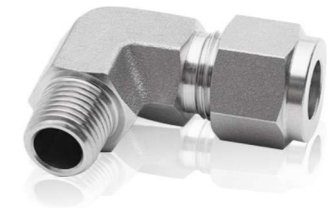
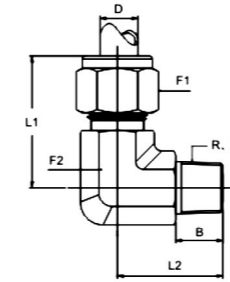
Rapid Screw Rotatable 90° Elbow



Model	D	B	F1	F2	L1	L2	R, N
RPL4-01-S	04	8	S10	S12	20.2	23.3	1/8"PT
RPL4-02-S	04	11	S10	S14	20.2	26.8	1/4"PT
RPL6-01-S	06	8	S12	S12	25.1	23.2	1/8"PT
RPL6-02-S	06	11	S12	S14	25.1	26.7	1/4"PT
RPL6-03-S	06	11	S12	S17	25.1	27.2	3/8"PT
RPL8-01-S	08	8	S14	S12	25.6	23.2	1/8"PT
RPL8-02-S	08	11	S14	S14	25.6	26.7	1/4"PT
RPL8-03-S	08	11	S14	S17	25.6	27.2	3/8"PT
RPL8-04-S	08	14.5	S14	S22	25.6	30.7	1/2"PT
RPL10-01-S	10	8	S17	S17	27.2	24.8	1/8"PT
RPL10-02-S	10	11	S17	S17	27.2	28.8	1/4"PT
RPL10-03-S	10	11	S17	S17	27.2	28.8	3/8"PT
RPL10-04-S	10	14.5	S17	S22	27.2	32.3	1/2"PT
RPL12-01-S	12	11	S19	S17	28.9	30.8	1/8"PT
RPL12-02-S	12	11	S19	S17	28.9	30.8	1/4"PT
RPL12-03-S	12	14.5	S19	S22	28.9	34.2	3/8"PT
RPL12-04-S	12	16	S19	S27	28.9	35.7	1/2"PT
RPL14-02-S	14	11	S22	S19	30.8	32.1	1/4"PT
RPL14-03-S	14	11	S22	S19	30.8	32.6	3/8"PT
RPL14-04-S	14	14.5	S22	S22	30.8	36.1	1/2"PT
RPL14-06-S	14	16	S22	S27	30.8	37.6	3/4"PT
RPL16-03-S	16	11	S22	S19	32.1	32.6	3/8"PT
RPL16-04-S	16	14.5	S22	S22	32.1	36.1	1/2"PT
RPL16-06-S	16	16	S22	S27	32.1	37.6	3/4"PT

## 4.42 FPL-S Series

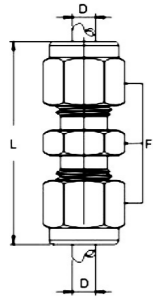
Ferrule-type Compression Male Elbow



Model	D	B	F1	F2	L1	L2	R, N
FPL4-M5-S	04	5	S12	S12	27.5	17	M5x0.8
FPL4-01-S	04	8	S12	S12	27.5	19.4	1/8"PT
FPL4-02-S	04	11	S12	S17	28.6	24.2	1/4"PT
FPL4-03-S	04	11	S12	S19	31.3	26.5	3/8"PT
FPL6-01-S	06	8	S14	S12	27.7	18.5	1/8"PT
FPL6-02-S	06	11	S14	S14	30.1	24.2	1/4"PT
FPL6-03-S	06	11	S14	S17	32.8	26.5	3/8"PT
FPL6-04-S	06	15	S14	S19	33.7	31.5	1/2"PT
FPL8-01-S	08	9	S17	S14	31	21.2	1/8"PT
FPL8-02-S	08	11	S17	S14	31	24.2	1/4"PT
FPL8-03-S	08	11	S17	S17	33.7	26.5	3/8"PT
FPL8-04-S	08	15	S17	S19	34.6	31.5	1/2"PT
FPL10-01-S	10	9	S19	S17	34.9	24.5	1/8"PT
FPL10-02-S	10	11	S19	S17	34.9	28	1/4"PT
FPL10-03-S	10	11	S19	S17	34.9	26.5	3/8"PT
FPL10-04-S	10	15	S19	S19	35.8	31.5	1/2"PT
FPL12-01-S	12	9	S22	S19	37.5	27	1/8"PT
FPL12-02-S	12	11	S22	S19	37.5	29.1	1/4"PT
FPL12-03-S	12	11	S22	S19	37.5	27.6	3/8"PT
FPL12-04-S	12	15	S22	S19	37.5	31.5	1/2"PT

### 4.43 FPU-S Series

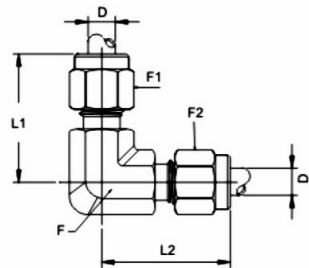
Ferrule-type Compression Straight



Model	D	F	L
FPU4-S	04	S10	23
FPU6-S	06	S12	30
FPU8-S	08	S14	31
FPU10-S	10	S17	34.5
FPU12-S	12	S19	38

### 4.44 FPV-S Series

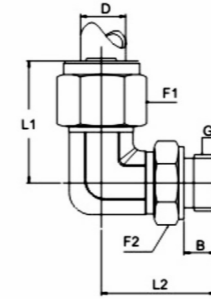
Ferrule-type Compression 90° Elbow



Model	D	F	F1	F2	L1	L2
FPV4-S	04	S12	S12	S12	27.5	27.5
FPV6-S	06	S12	S14	S14	27.7	27.7
FPV8-S	08	S14	S17	S17	31	31
FPV10-S	10	S17	S19	S19	34.9	34.9
FPV12-S	12	S19	S22	S22	37.5	37.5

### 4.45 RPL-G-S

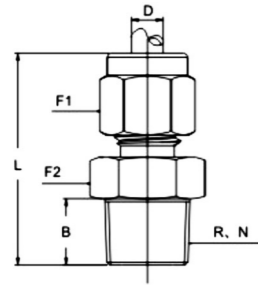
Rapid Screw Rotatable 90° Elbow With O Ring



Model	D	B	F1	F2	L1	L2	R,N
RPL4-G01-S	04	5	S10	S14	20.2	21.3	G1/8
RPL4-G02-S	04	6.5	S10	S17	20.2	22.3	G1/4
RPL6-G01-S	06	5	S12	S14	25.1	21.2	G1/8
RPL6-G02-S	06	6.5	S12	S17	25.1	24.2	G1/4
RPL6-G03-S	06	8	S12	S19	25.1	26.2	G3/8
RPL8-G01-S	08	5	S14	S14	25.6	21.2	G1/8
RPL8-G02-S	08	6.5	S14	S17	25.6	24.2	G1/4
RPL8-G03-S	08	8	S14	S19	25.6	25.7	G3/8
RPL8-G04-S	08	8	S14	S24	25.6	25.7	G1/2
RPL10-G01-S	10	5	S17	S17	27.2	22.8	G1/8
RPL10-G02-S	10	6.5	S17	S17	27.2	25.3	G1/4
RPL10-G03-S	10	8	S17	S19	27.2	27.3	G3/8
RPL10-G04-S	10	8	S17	S24	27.2	27.3	G1/2
RPL12-G01-S	12	5	S19	S17	28.9	28.2	G1/8
RPL12-G02-S	12	6.5	S19	S19	28.9	29.2	G1/4
RPL12-G03-S	12	8	S19	S24	28.9	29.2	G3/8
RPL12-G04-S	12	8	S19	S30	28.9	32.7	G1/2
RPL14-G02-S	14	6.5	S19	S19	30.8	29.6	G1/4
RPL14-G03-S	14	8	S22	S19	30.8	31.1	G3/8
RPL14-G04-S	14	8	S22	S24	30.8	31.1	G1/2
RPL14-G06-S	14	9	S22	S30	30.8	32.6	G3/4
RPL16-G03-S	16	8	S22	S19	32.1	31.1	G3/8
RPL16-G04-S	16	8	S22	S24	32.1	31.1	G1/2
RPL16-G06-S	16	9	S22	S30	32.1	32.6	G3/4

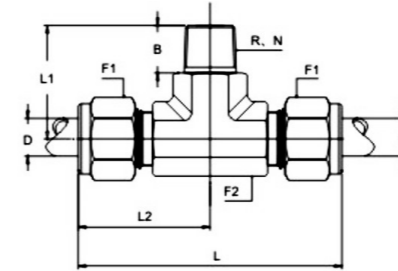
## 4.46 FPC-S Series

Ferrule-type Compression Male Straight



## 4.47 FPB-S

Ferrule-type Compression Male Tee Branch

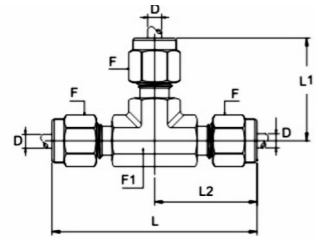


Model	D	B	F1	F2	L	R,N
FPC4-01-S	04	8	S12	S12	29.1	1/8"PT
FPC4-02-S	04	11	S12	S14	32.1	1/4"PT
FPC4-03-S	04	11	S12	S17	32.6	3/8"PT
FPC6-01-S	06	8	S14	S12	30.6	1/8"PT
FPC6-02-S	06	11	S14	S14	33.6	1/4"PT
FPC6-03-S	06	11	S14	S17	34	3/8"PT
FPC6-04-S	06	14.5	S14	S22	38	1/2"PT
FPC8-01-S	08	8	S17	S14	31.5	1/8"PT
FPC8-02-S	08	11	S17	S14	34.5	1/4"PT
FPC8-03-S	08	11	S17	S17	35	3/8"PT
FPC8-04-S	08	14.5	S17	S22	39	1/2"PT
FPC10-02-S	10	11	S19	S19	36.2	1/4"PT
FPC10-03-S	10	11	S19	S19	36.2	3/8"PT
FPC10-04-S	10	14.5	S19	S22	40.2	1/2"PT
FPC12-02-S	12	11	S22	S19	38.4	1/4"PT
FPC12-03-S	12	11	S22	S19	38.4	3/8"PT
FPC12-04-S	12	14.5	S22	S22	41.9	1/2"PT

Model	D	B	F1	F2	L	L1	L2	R,N
FPB4-01-S	04	8	S12	S12	55	19.4	27.5	1/8"PT
FPB4-02-S	04	11	S12	S17	59.2	24.2	28.6	1/4"PT
FPB4-03-S	04	11	S12	S19	62.6	26.5	31.3	3/8"PT
FPB6-01-S	06	8	S14	S12	55.4	18.5	27.7	1/8"PT
FPB6-02-S	06	11	S14	S14	60.2	24.2	30.1	1/4"PT
FPB6-03-S	06	11	S14	S17	65.6	26.5	32.8	3/8"PT
FPB6-04-S	06	15	S14	S19	67.4	31.5	33.7	1/2"PT
FPB8-01-S	08	9	S17	S14	62	21.2	31	1/8"PT
FPB8-02-S	08	11	S17	S14	62	24.2	31	1/4"PT
FPB8-03-S	08	11	S17	S17	67.4	26.5	33.7	3/8"PT
FPB8-04-S	08	15	S17	S19	69.2	31.5	34.6	1/2"PT
FPB10-01-S	10	9	S19	S17	69.8	26	34.9	1/8"PT
FPB10-02-S	10	11	S19	S17	69.8	28	34.9	1/4"PT
FPB10-03-S	10	11	S19	S17	69.8	26.5	34.9	3/8"PT
FPB10-04-S	10	15	S19	S19	71.6	31.5	35.8	1/2"PT
FPB12-01-S	12	9	S22	S19	75	27	37.5	1/8"PT
FPB12-02-S	12	11	S22	S19	75	29.1	37.5	1/4"PT
FPB12-03-S	12	11	S22	S19	75	27.6	37.5	3/8"PT
FPB12-04-S	12	15	S22	S19	75	31.5	37.5	1/2"PT

## 4.48 FPE-S Series

Ferrule-type Compression Tee Branch



Model	D	F	F1	L	L1	L2
FPE4-S	04	S12	S12	55.4	27.7	27.7
FPE6-S	06	S14	S12	55.4	27.7	27.7
FPE8-S	08	S17	S14	62	31	31
FPE10-S	10	S19	S17	69.8	34.9	34.9
FPE12-S	12	S22	S19	75	37.5	37.5

## 5 New Products



SPZA Series Cross Branch



SPK Series Multiple Branch



SCV Series Check Valve



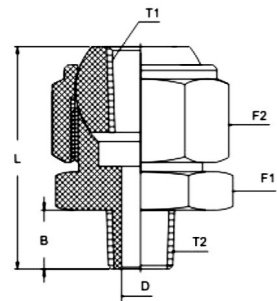
SPMU Ferrule compression Bulkhead



SPUF Ferrule Compression Straight

## 4.49 SMF Series

Male-Female Universal Straight



Model	D	B	F1	F2	T1	T2	L
SMF-01-01	5.5	8.5	S22	S22	1/8"	1/8"	32
SMF-01-02	8	11	S22	S22	1/8"	1/4"	36
SMF-02-02	8	12	S29	S29	1/4"	1/4"	41
SMF-02-03	11	13	S29	S29	1/4"	3/8"	43
SMF-03-03	11	13	S35	S35	3/8"	3/8"	49